

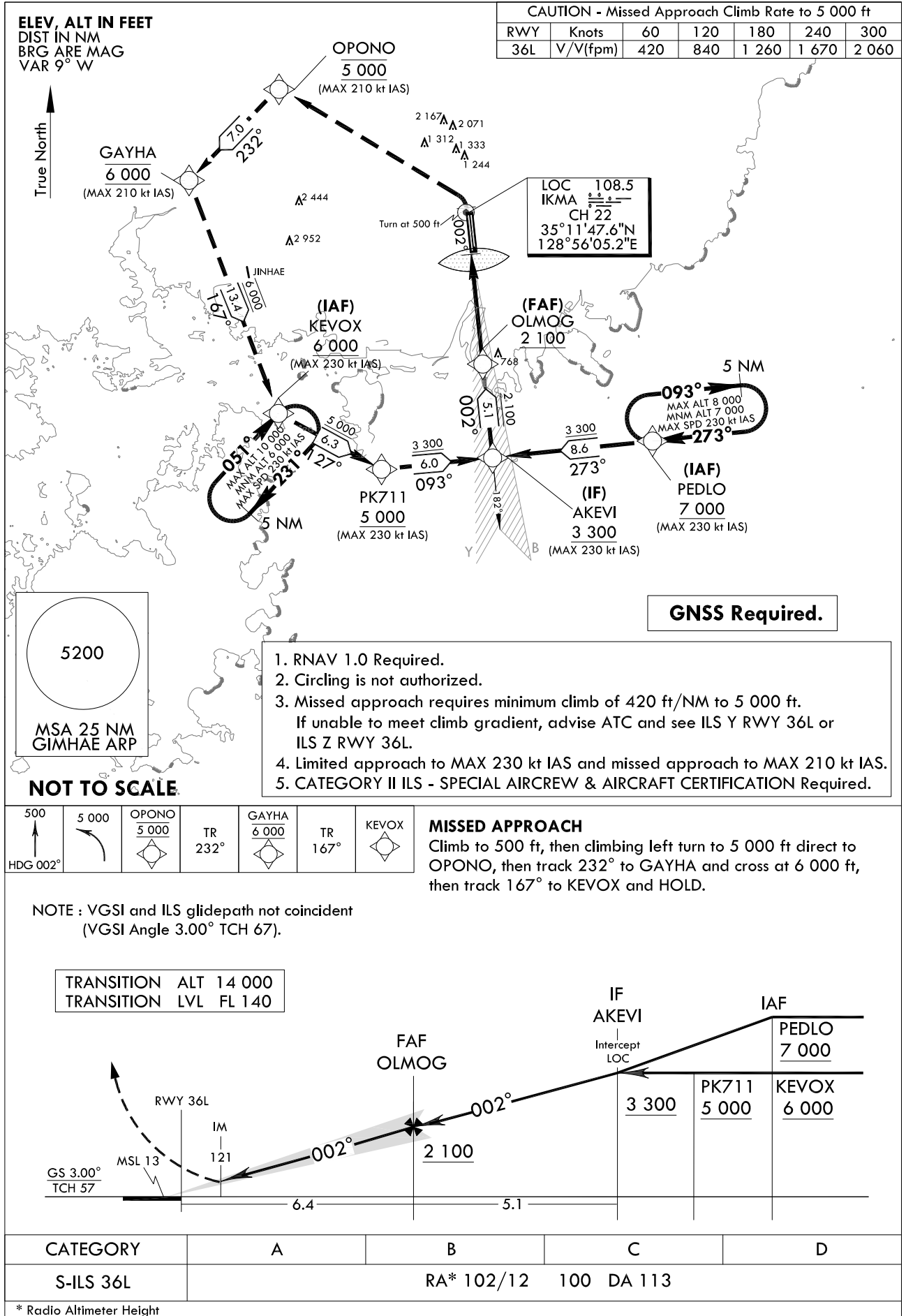
**INSTRUMENT
APPROACH
CHART**

AERODROME ELEV 13 ft
HEIGHTS RELATED TO
RWY 36L ELEV TDZ 13 ft

GIMHAE APP 125.5 364.0
GIMHAE TWR 118.1 118.45
233.3 236.6

BUSAN/Gimhae Intl(RKPK)
ILS RWY 36L
CAT II

Note : Approach and circle to land under U.S. TERPS.



Change : Information of glide slope.

BUSAN/Gimhae INTL(RKPK)
ILS RWY 36L
CAT II

AERONAUTICAL DATA TABULATION

Instrument Approach Procedure Coding Tables

ILS RWY 36L CAT II - via PEDLO to AKEVI(IF)

Serial Number	Path Descriptor	Waypoint Identifier	Fly-over	Course/Track °M(T)	Distance (NM)	Turn direction	Altitude (ft)	Speed (kt)	Coordinates	VPA/TCH	Navigation specification	Remarks
001	-	PEDLO	-	-	-	-	+7 000	-230	34°59'23.1"N 129°08'15.3"E	-	RNAV 1	IAF
002	TF	AKEVI	-	272.59(264.07)	8.6	-	+3 300	-230	34°58'29.0"N 128°57'48.0"E	-	RNAV 1	IF

ILS RWY 36L CAT II - via KEVOX to AKEVI(IF)

Serial Number	Path Descriptor	Waypoint Identifier	Fly-over	Course/Track °M(T)	Distance (NM)	Turn direction	Altitude (ft)	Speed (kt)	Coordinates	VPA/TCH	Navigation specification	Remarks
001	-	KEVOX	-	-	-	-	+6 000	-230	35°00'51.7"N 128°43'47.2"E	-	RNAV 1	IAF
002	TF	PK711	-	126.82(118.30)	6.3	-	+5 000	-230	34°57'51.9"N 128°50'32.3"E	-	RNAV 1	SDF
003	TF	AKEVI	-	092.58(084.06)	6.0	-	+3 300	-230	34°58'29.0"N 128°57'48.0"E	-	RNAV 1	IF

ILS RWY 36L CAT II - via AKEVI(IF) to MAHF

Serial Number	Path Descriptor	Waypoint Identifier	Fly-over	Course/Track °M(T)	Distance (NM)	Turn direction	Altitude (ft)	Speed (kt)	Coordinates	VPA/TCH	Navigation specification	Remarks
001	TF	AKEVI	-	-	-	-	+3 300	-230	34°58'29.0"N 128°57'48.0"E	-	RNAV 1	IF
002	TF	OLMOG	-	002.49(353.97)	5.1	-	+2 100	-	35°03'32.1"N 128°57'09.1"E	-	-	FAF
003	-	DA	-	002.49(353.97)	-	-	+113	-	-	-	LOC	DA
004	-	RWY 36L	-	002.49(353.97)	-	-	-	-	35°09'54.7"N 128°56'19.8"E	3.0/57	LOC	-
005	VA	-	-	002.49(353.97)	-	-	+500	-210	-	-	RNAV 1	CG 420 ft/NM to 5 000 ft
006	DF	OPONO	-	-	-	L	@5 000	-210	35°18'24.2"N 128°43'46.2"E	-	RNAV 1	-
007	TF	GAYHA	-	232.27(223.75)	7.0	-	@6 000	-210	35°13'22.4"N 128°37'54.4"E	-	RNAV 1	-
008	TF	KEVOX	-	167.38(158.86)	13.4	-	+6 000	-230	35°00'51.7"N 128°43'47.2"E	-	RNAV 1	-

HOLDING PROCEDURE

Holding Identification	Path Descriptor	Waypoint Identifier	Fly-over	Course/Track °M(T)	Distance (NM)	Turn direction	Altitude (ft)	Speed (kt)	Coordinates	VPA/TCH	Navigation specification	Remarks
ILS RWY 36L CAT II	HM	PEDLO	-	272.59(264.07)	5.0	R	-8 000 +7 000	-230	34°59'23.1"N 129°08'15.3"E	-	RNAV 1	Hold at PEDLO E Right Turn 273° Inbound 5 NM Leg.
	HM	KEVOX	-	051.05(042.53)	5.0	R	-10 000 +6 000	-230	35°00'51.7"N 128°43'47.2"E	-	RNAV 1	Hold at KEVOX SW Right Turn 051° Inbound 5 NM Leg.

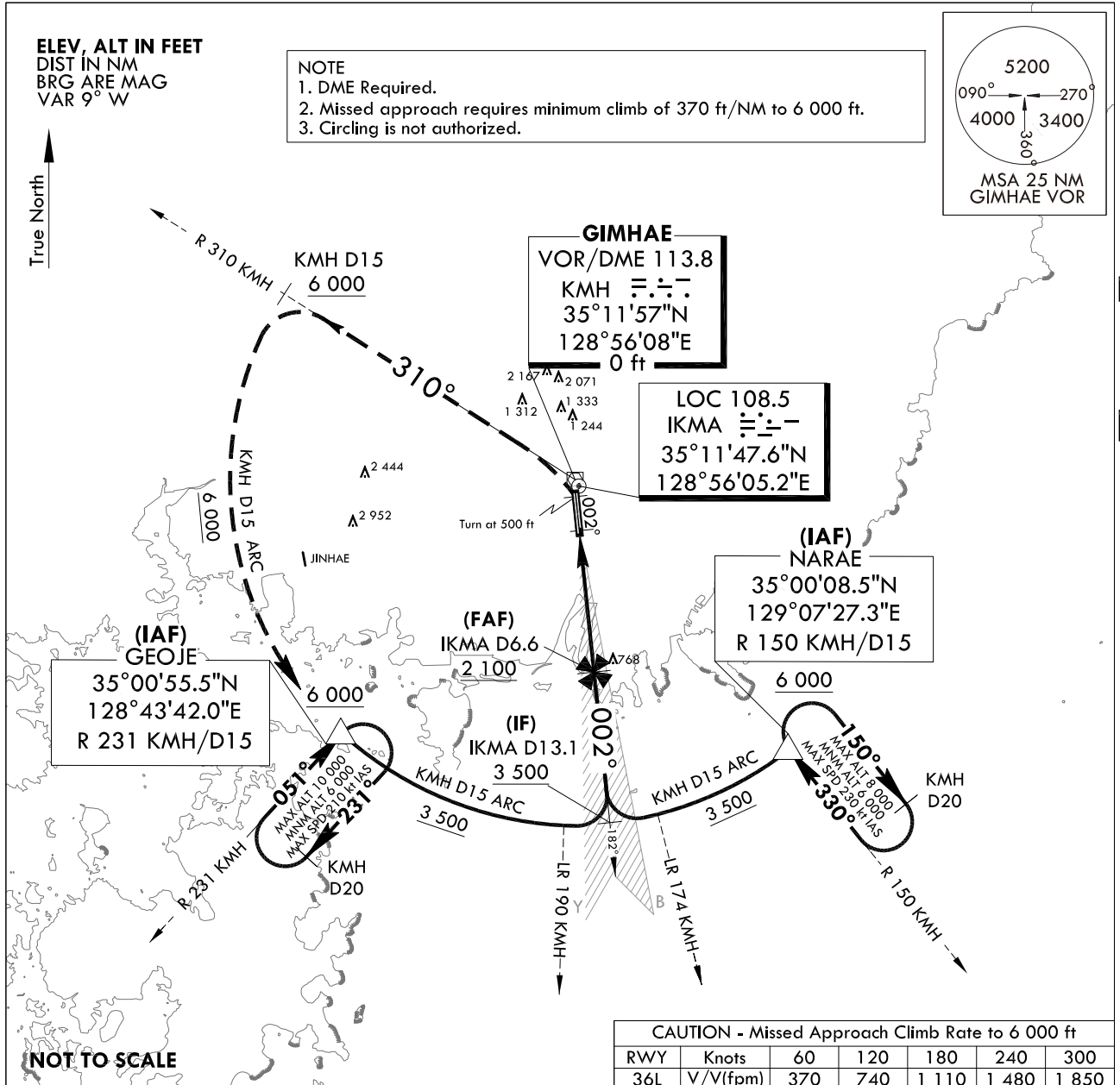
**INSTRUMENT
APPROACH
CHART**

AERODROME ELEV 13 ft
HEIGHTS RELATED TO
RWY 36L ELEV TDZ 13 ft

GIMHAE APP 125.5 364.0
GIMHAE TWR 118.1 118.45
233.3 236.6

BUSAN/Gimhae Intl(RKPK)
ILS Y RWY 36L

Note : Approach and circle to land under U.S. TERPS.

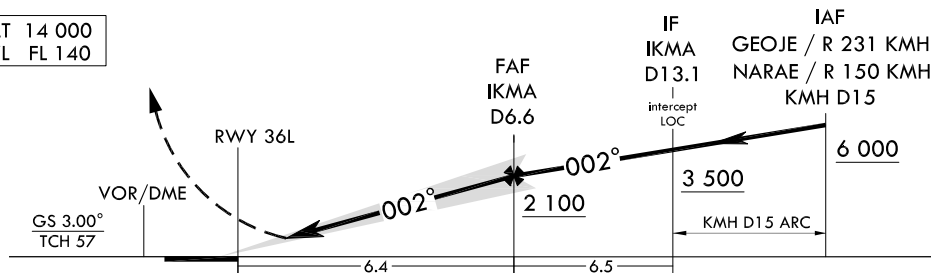


MISSED APPROACH

Climb to 500 ft then climbing left turn to 6 000 ft on R 310 KM H to 15 DME and at or above 6 000 ft, then arc KM H D15 to GEOJE and hold.

NOTE : Use IKMA DME when on the localizer course.
NOTE : VGSI and ILS glidepath not coincident (VGSI Angle 3.00° TCH 67).

TRANSITION ALT 14 000
TRANSITION LVL FL 140



CATEGORY	A	B	C	D
S-ILS 36L	213/18 200 (200 - 1/2)	213/24* 200(200-1/2) (*Use civil only RVR 18)		
	When TDZ/CL LGT INOP, increase RVR to 24			
ALS INOP	213/40 200(200 - 3/4)			

Change : Amended morse code(KM H and IKMA).

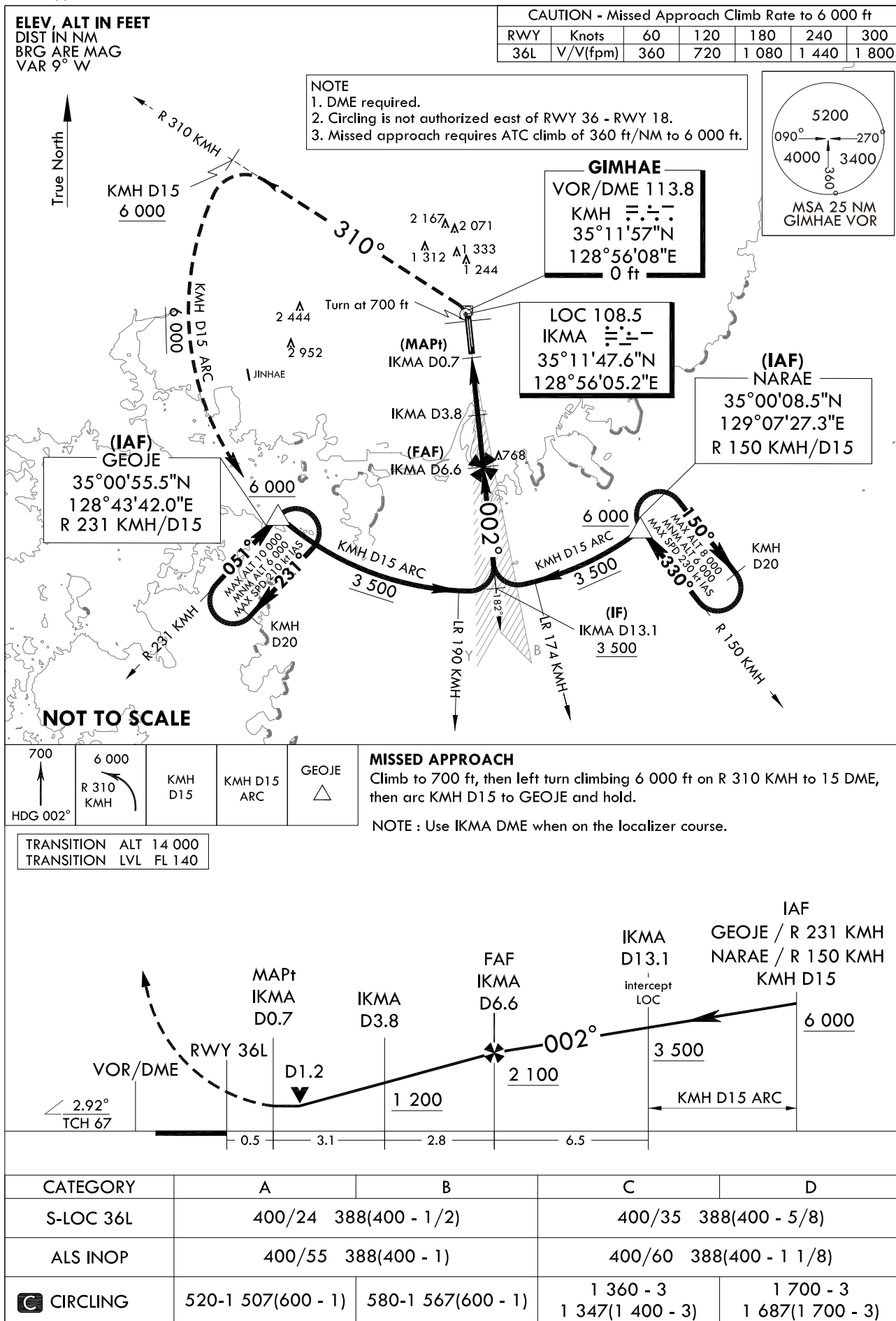
INTENTIONALLY

LEFT

BLANK

INSTRUMENT
APPROACH
CHARTAERODROME ELEV 13 ft
HEIGHTS RELATED TO
THR RWY 36L - ELEV 12 ftGIMHAE APP 125.5 364.0
GIMHAE TWR 118.1 118.45
233.3 236.6BUSAN/Gimhae Intl(RKPK)
LOC Y RWY 36L

Note : Approach and circle to land under U.S. TERPS.



Change : Amended morse code(KMH and IKMA).

INTENTIONALLY

LEFT

BLANK

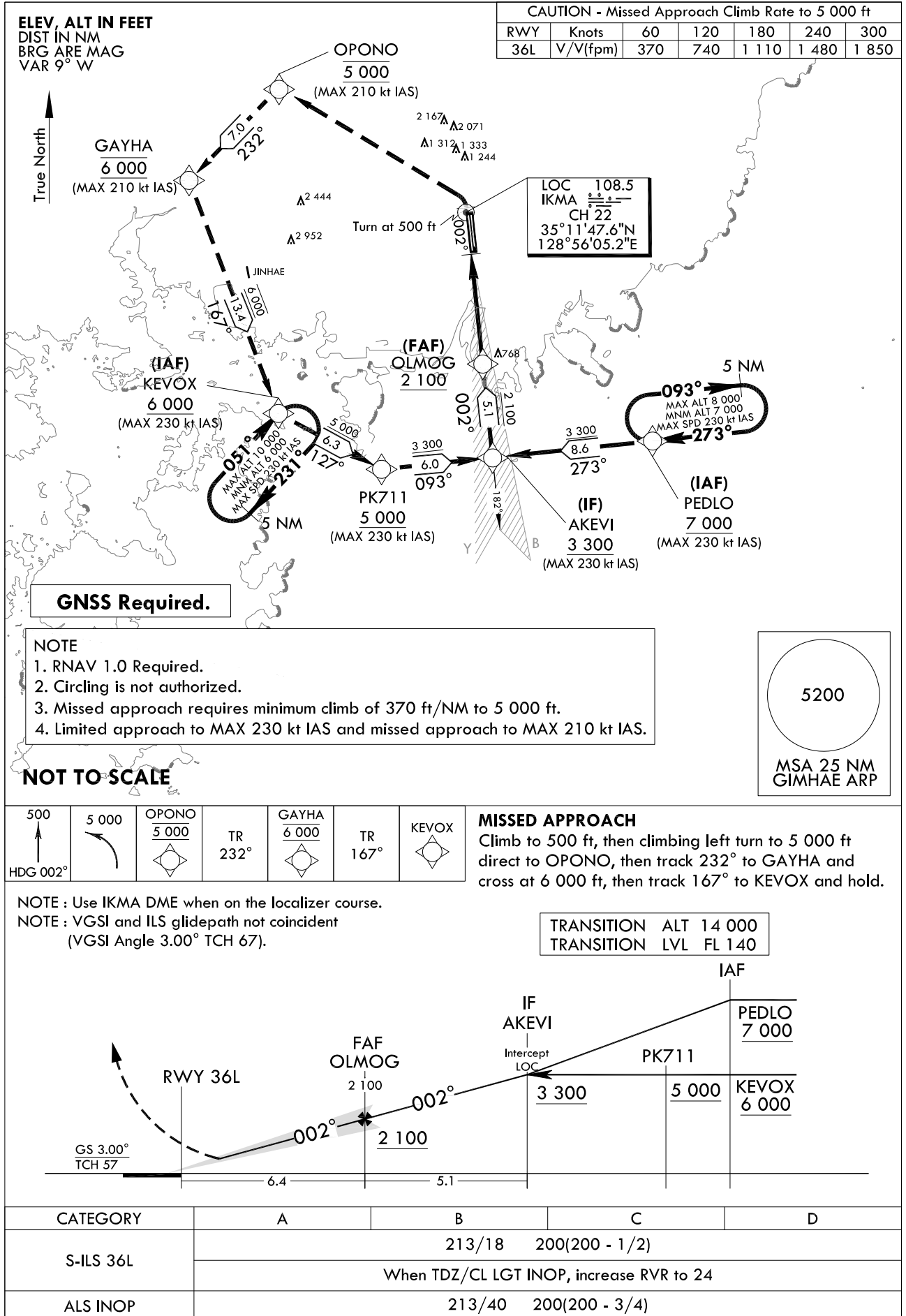
**INSTRUMENT
APPROACH
CHART**

AERODROME ELEV 13 ft
HEIGHTS RELATED TO
RWY 36L ELEV TDZ 13 ft

GIMHAE APP 125.5 364.0
GIMHAE TWR 118.1 118.45
233.3 236.6

BUSAN/Gimhae Intl(RKPK)
ILS Z RWY 36L

Note : Approach and circle to land under U.S. TERPS.



AERONAUTICAL DATA TABULATION

Instrument Approach Procedure Coding Tables

ILS Z RWY 36L - via PEDLO to AKEVI(IF)

Serial Number	Path Descriptor	Waypoint Identifier	Fly-over	Course/Track °M(°T)	Distance (NM)	Turn direction	Altitude (ft)	Speed (kt)	Coordinates	VPA/TCH	Navigation specification	Remarks
001	-	PEDLO	-	-	-	-	+7 000	-230	34°59'23.1"N 129°08'15.3"E	-	RNAV 1	IAF
002	TF	AKEVI	-	272.59(264.07)	8.6	-	+3 300	-230	34°58'29.0"N 128°57'48.0"E	-	RNAV 1	IF

ILS Z RWY 36L - via KEVOX to AKEVI(IF)

Serial Number	Path Descriptor	Waypoint Identifier	Fly-over	Course/Track °M(°T)	Distance (NM)	Turn direction	Altitude (ft)	Speed (kt)	Coordinates	VPA/TCH	Navigation specification	Remarks
001	-	KEVOX	-	-	-	-	+6 000	-230	35°00'51.7"N 128°43'47.2"E	-	RNAV 1	IAF
002	TF	PK711	-	126.82(118.30)	6.3	-	+5 000	-230	34°57'51.9"N 128°50'32.3"E	-	RNAV 1	SDF
003	TF	AKEVI	-	092.58(084.06)	6.0	-	+3 300	-230	34°58'29.0"N 128°57'48.0"E	-	RNAV 1	IF

ILS Z RWY 36L - via AKEVI(IF) to MAHF

Serial Number	Path Descriptor	Waypoint Identifier	Fly-over	Course/Track °M(°T)	Distance (NM)	Turn direction	Altitude (ft)	Speed (kt)	Coordinates	VPA/TCH	Navigation specification	Remarks
001	TF	AKEVI	-	-	-	-	+3 300	-230	34°58'29.0"N 128°57'48.0"E	-	RNAV 1	IF
002	TF	OLMOG	-	002.49(353.97)	5.1	-	+2 100	-	35°03'32.1"N 128°57'09.1"E	-	-	FAF
003	-	DA	-	002.49(353.97)	-	-	-	-	-	-	LOC	DA
004	-	RWY 36L	-	002.49(353.97)	-	-	-	-	35°09'54.7"N 128°56'19.8"E	3.0/57	LOC	-
005	VA	-	-	002.49(353.97)	-	-	+500	-210	-	-	RNAV 1	CG 370 ft/NM to 5 000 ft
006	DF	OPONO	-	-	-	L	@5 000	-210	35°18'24.2"N 128°43'46.2"E	-	RNAV 1	-
007	TF	GAYHA	-	232.27(223.75)	7.0	-	@6 000	-210	35°13'22.4"N 128°37'54.4"E	-	RNAV 1	-
008	TF	KEVOX	-	167.38(158.86)	13.4	-	+6 000	-230	35°00'51.7"N 128°43'47.2"E	-	RNAV 1	-

HOLDING PROCEDURE

Holding Identification	Path Descriptor	Waypoint Identifier	Fly-over	Course/Track °M(°T)	Distance (NM)	Turn direction	Altitude (ft)	Speed (kt)	Coordinates	VPA/TCH	Navigation specification	Remarks
ILS Z RWY 36L	HM	PEDLO	-	272.59(264.07)	5.0	R	-8 000 +7 000	-230	34°59'23.1"N 129°08'15.3"E	-	RNAV 1	Hold at PEDLO E Right Turn 273° Inbound 5 NM Leg.
	HM	KEVOX	-	051.05(042.53)	5.0	R	-10 000 +6 000	-230	35°00'51.7"N 128°43'47.2"E	-	RNAV 1	Hold at KEVOX SW Right Turn 051° Inbound 5 NM Leg.

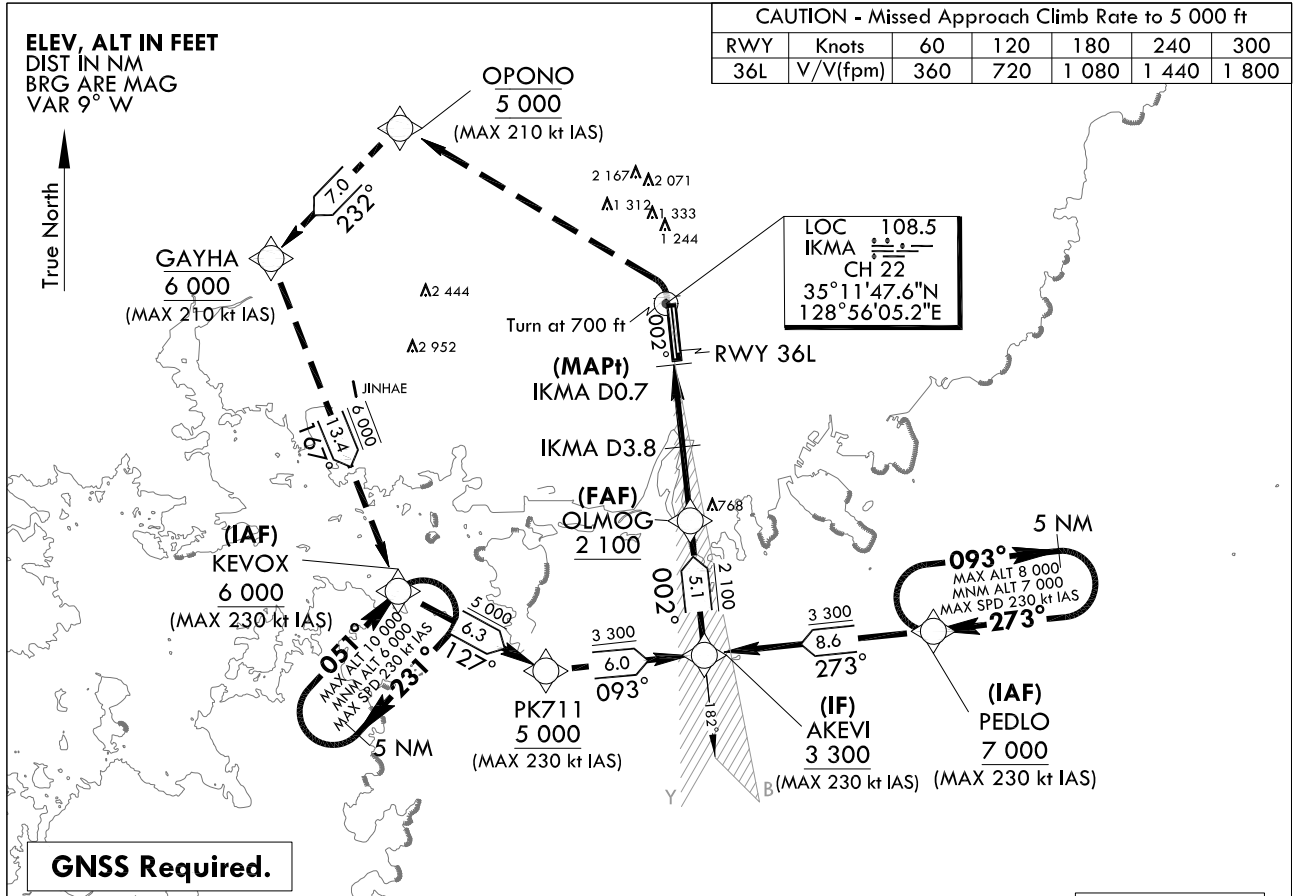
**INSTRUMENT
APPROACH
CHART**

AERODROME ELEV 13 ft
HEIGHTS RELATED TO
THR RWY 36L - ELEV 12 ft

GIMHAE APP 125.5 364.0
GIMHAE TWR 118.1 118.45
233.3 236.6

BUSAN/Gimhae Intl(RKPK)
LOC Z RWY 36L

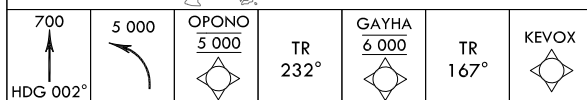
Note : Approach and circle to land under U.S. TERPS.



NOTE

1. RNAV 1.0 Required.
2. DME Required.
3. Circling is not authorized east of RWY 36 - RWY 18.
4. Missed approach requires ATC climb of 360 ft/NM to 5 000 ft.
5. Limited approach to MAX 230 kt IAS and missed approach to MAX 210 kt IAS.

NOT TO SCALE

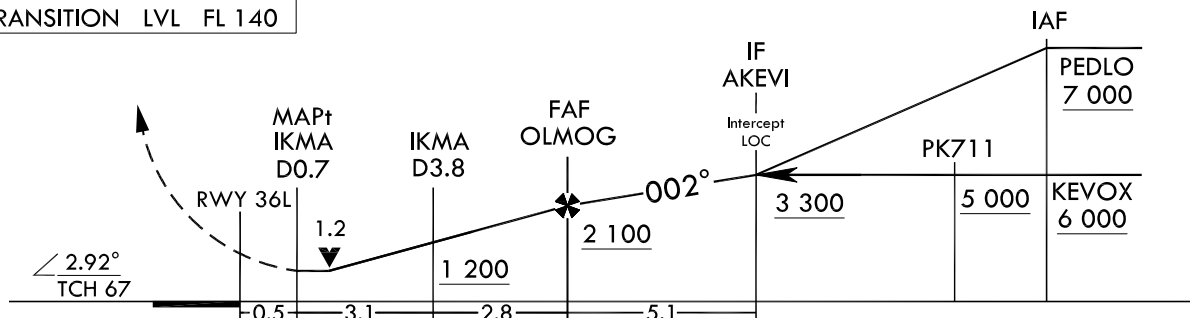


MISSED APPROACH

Climb to 700 ft then climbing left turn to 5 000 ft direct to Opono, then track 232° to GAYHA and cross at 6 000 ft, then track 167° to KEVOX and hold.

NOTE : Use IKMA DME when on the localizer course.

TRANSITION ALT 14 000
TRANSITION LVL FL 140



CATEGORY	A	B	C	D
S-LOC 36L	400/24 388(400 - 1/2)		400/35 388(400 - 5/8)	
ALS INOP	400/55 388(400 - 1)		400/60 388(400 - 1 1/8)	
CIRCLING	520-1 507(600 - 1)	580-1 567(600 - 1)	1 360 - 3 1 347(1 400 - 3)	1 700 - 3 1 687(1 700 - 3)

Change : Withdrawal of symbol for glide slope.

AERONAUTICAL DATA TABULATION

Instrument Approach Procedure Coding Tables

LOC Z RWY 36L - via PEDLO to AKEVI(IF)									
Serial Number	Path Descriptor	Waypoint Identifier	Fly-over	Course/Track °M(°T)	Distance (NM)	Turn direction	Altitude (ft)	Speed (kt)	Coordinates
001	-	PEDLO	-	-	-	-	+7 000	-230	34°59'23.1"N 129°08'15.3"E
002	TF	AKEVI	-	272.59(264.07)	8.6	-	+3 300	-230	34°58'29.0"N 128°57'48.0"E

LOC Z RWY 36L - via KEVOX to AKEVI(IF)									
Serial Number	Path Descriptor	Waypoint Identifier	Fly-over	Course/Track °M(°T)	Distance (NM)	Turn direction	Altitude (ft)	Speed (kt)	Coordinates
001	-	KEVOX	-	-	-	-	+6 000	-230	35°00'51.7"N 128°43'47.2"E
002	TF	PK711	-	126.82(118.30)	6.3	-	+5 000	-230	34°57'51.9"N 128°50'32.3"E
003	TF	AKEVI	-	092.58(084.06)	6.0	-	+3 300	-230	34°58'29.0"N 128°57'48.0"E

LOC Z RWY 36L - via AKEVI(IF) to MAHF									
Serial Number	Path Descriptor	Waypoint Identifier	Fly-over	Course/Track °M(°T)	Distance (NM)	Turn direction	Altitude (ft)	Speed (kt)	Coordinates
001	TF	AKEVI	-	-	-	-	+3 300	-230	34°58'29.0"N 128°57'48.0"E
002	TF	OLMOG	-	002.49(353.97)	5.1	-	+2 100	-	35°03'32.1"N 128°57'09.1"E
003	-	IKMA D3.8	-	002.49(353.97)	2.8	-	+1 200	-	-
004	-	IKMA D0.7	-	002.49(353.97)	3.1	-	+400	-	-
005	-	RWY 36L	-	002.49(353.97)	0.5	-	-	-	35°09'54.7"N 128°56'19.8"E
006	VA	-	-	002.49(353.97)	-	-	+700	-210	-
007	DF	OPONO	-	-	-	L	@5 000	-210	35°18'24.2"N 128°43'46.2"E
008	TF	GAYHA	-	232.27(223.75)	7.0	-	@6 000	-210	35°13'22.4"N 128°37'54.4"E
009	TF	KEVOX	-	167.38(158.86)	13.4	-	+6 000	-230	35°00'51.7"N 128°43'47.2"E

HOLDING PROCEDURE									
Holding Identification	Path Descriptor	Waypoint Identifier	Fly-over	Course/Track °M(°T)	Distance (NM)	Turn direction	Altitude (ft)	Speed (kt)	Coordinates
LOC Z RWY 36L	HM	PEDLO	-	272.59(264.07)	5.0	R	-8 000 +7 000	-230	34°59'23.1"N 129°08'15.3"E
	HM	KEVOX	-	051.05(042.53)	5.0	R	-10 000 +6 000	-230	35°00'51.7"N 128°43'47.2"E

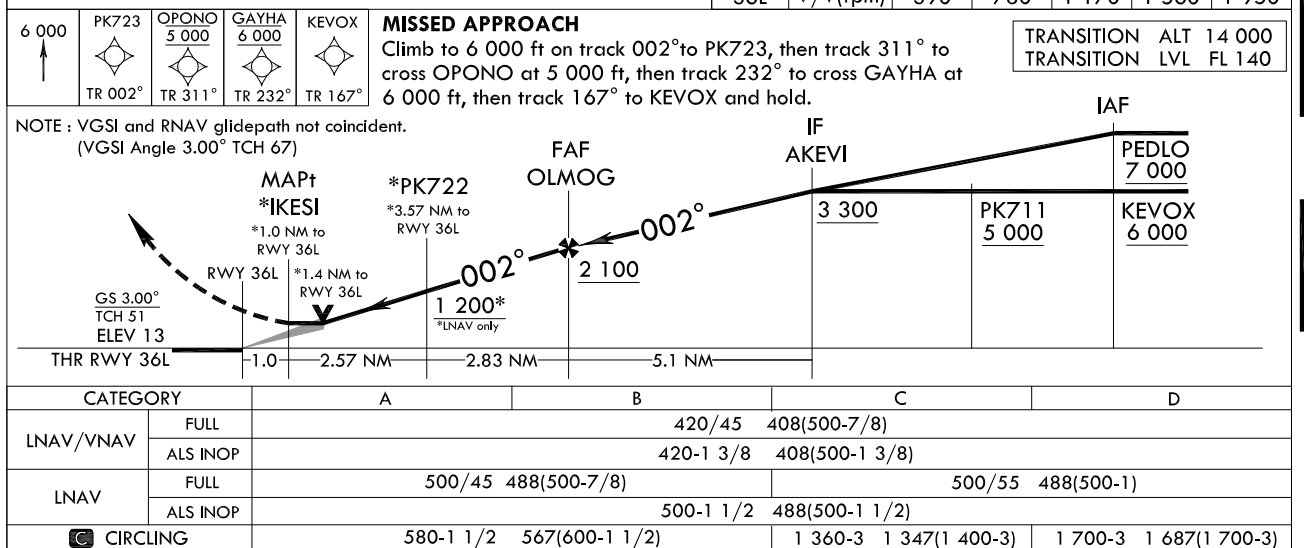
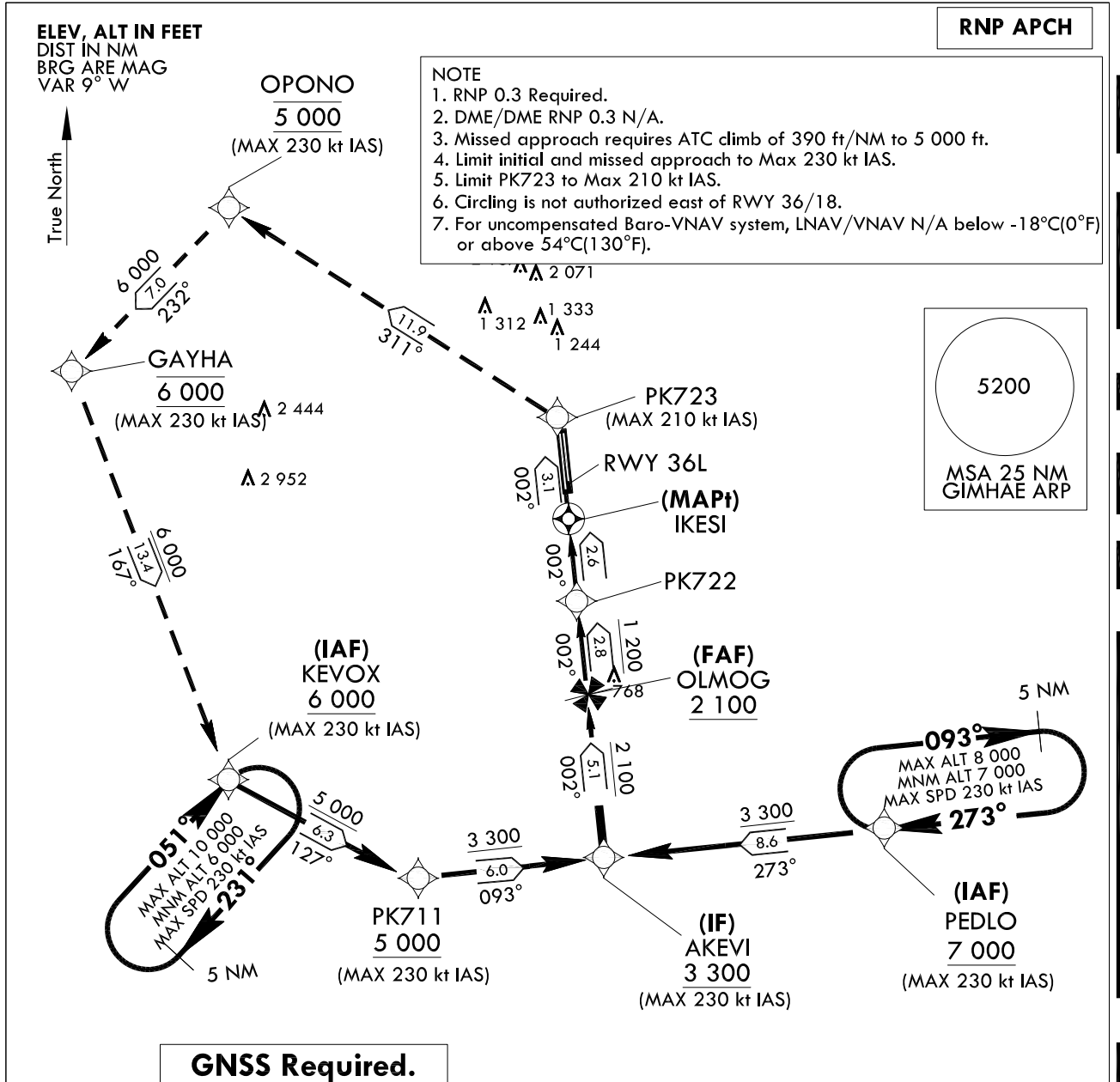
Remarks

Hold at PEDLO E Right Turn 273° Inbound 5 NM Leg.

Hold at KEVOX SW Right Turn 051° Inbound 5 NM Leg.

INSTRUMENT
APPROACH
CHARTAERODROME ELEV 13 ft
HEIGHTS RELATED TO
THR RWY 36L - ELEV 12 ftGIMHAE APP 125.5 364.0
GIMHAE TWR 118.1 118.45
233.3 236.6BUSAN/Gimhae Intl(RKPK)
RNP RWY 36L

Note : Approach and circle to land under U.S. TERPS.



Change : Information of MAG VAR(7° W → 9° W) and instrument approach procedure for RWY 36L.

BUSAN/Gimhae Intl(RKPK)
RNP RWY 36L

AERONAUTICAL DATA TABULATION

Instrument Approach Procedure Coding Tables

RNP RWY 36L - via PEDLO to AKEV(IF)									
Serial Number	Path Descriptor	Waypoint Identifier	Fly-over	Course/Track °M(T)	Distance (NM)	Turn direction	Altitude (ft)	Speed (kt)	Coordinates
001	-	PEDLO	-	-	-	-	+7 000	-230	34°59'23.1"N 129°08'15.3"E
002	TF	AKEVI	-	272.59(264.07)	8.6	-	+3 300	-230	34°58'29.0"N 128°57'48.0"E

RNP RWY 36L - via KEVOX to AKEV(IF)									
Serial Number	Path Descriptor	Waypoint Identifier	Fly-over	Course/Track °M(T)	Distance (NM)	Turn direction	Altitude (ft)	Speed (kt)	Coordinates
001	-	KEVOX	-	-	-	-	+6 000	-230	35°00'51.7"N 128°43'47.2"E
002	TF	PK711	-	126.82(118.30)	6.3	-	+5 000	-230	34°57'51.9"N 128°50'32.3"E
003	TF	AKEVI	-	092.58(084.06)	6.0	-	+3 300	-230	34°58'29.0"N 128°57'48.0"E

RNP RWY 36L - via AKEV(IF) to MAHF									
Serial Number	Path Descriptor	Waypoint Identifier	Fly-over	Course/Track °M(T)	Distance (NM)	Turn direction	Altitude (ft)	Speed (kt)	Coordinates
001	TF	AKEVI	-	-	-	-	+3 300	-230	34°58'29.0"N 128°57'48.0"E
002	TF	OLMOG	-	002.49(353.97)	5.1	-	+2 100	-	35°03'32.1"N 128°57'09.1"E
003	TF	PK722	-	002.48(353.96)	2.83	-	+1 200	-	35°06'21.1"N 128°56'47.3"E
004	TF	IKESI	Y	002.48(353.96)	2.57	-	+500	-	35°08'54.9"N 128°56'27.5"E
005	TF	PK723	-	002.47(353.95)	3.08	-	-	-210	35°11'59.2"N 128°56'03.7"E
006	TF	OPONO	-	311.05(302.53)	11.9	-	@5 000	-230	35°18'24.2"N 128°43'46.2"E
007	TF	GAYHA	-	232.27(223.75)	7.0	-	@6 000	-230	35°13'22.4"N 128°37'54.4"E
008	TF	KEVOX	-	167.38(158.86)	13.4	-	+6 000	-230	35°00'51.7"N 128°43'47.2"E

HOLDING PROCEDURE

Holding Identification	Path Descriptor	Waypoint Identifier	Fly-over	Course/Track °M(T)	Distance (NM)	Turn direction	Altitude (ft)	Speed (kt)	Coordinates	VPA/TCH	Navigation specification	Remarks
RNP RWY 36L	HM	PEDLO	-	272.59(264.07)	5.0	R	-8 000 +7 000	-230	34°59'23.1"N 129°08'15.3"E	-	RNAV 1	Hold at PEDLO E Right Turn 273° Inbound 5 NM Leg.
		KEVOX	-	051.05(042.53)	5.0	R	-10 000 +6 000	-230	35°00'51.7"N 128°43'47.2"E	-	RNAV 1	Hold at KEVOX SW Right Turn 051° Inbound 5 NM Leg.

Change : Information of instrument approach procedure for RWY 36L.

INTENTIONALLY

LEFT

BLANK

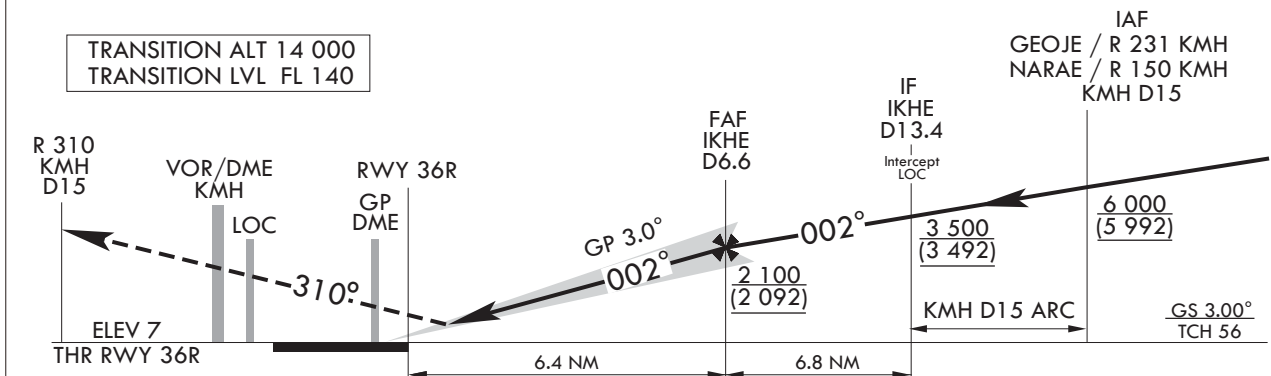
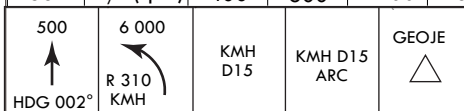
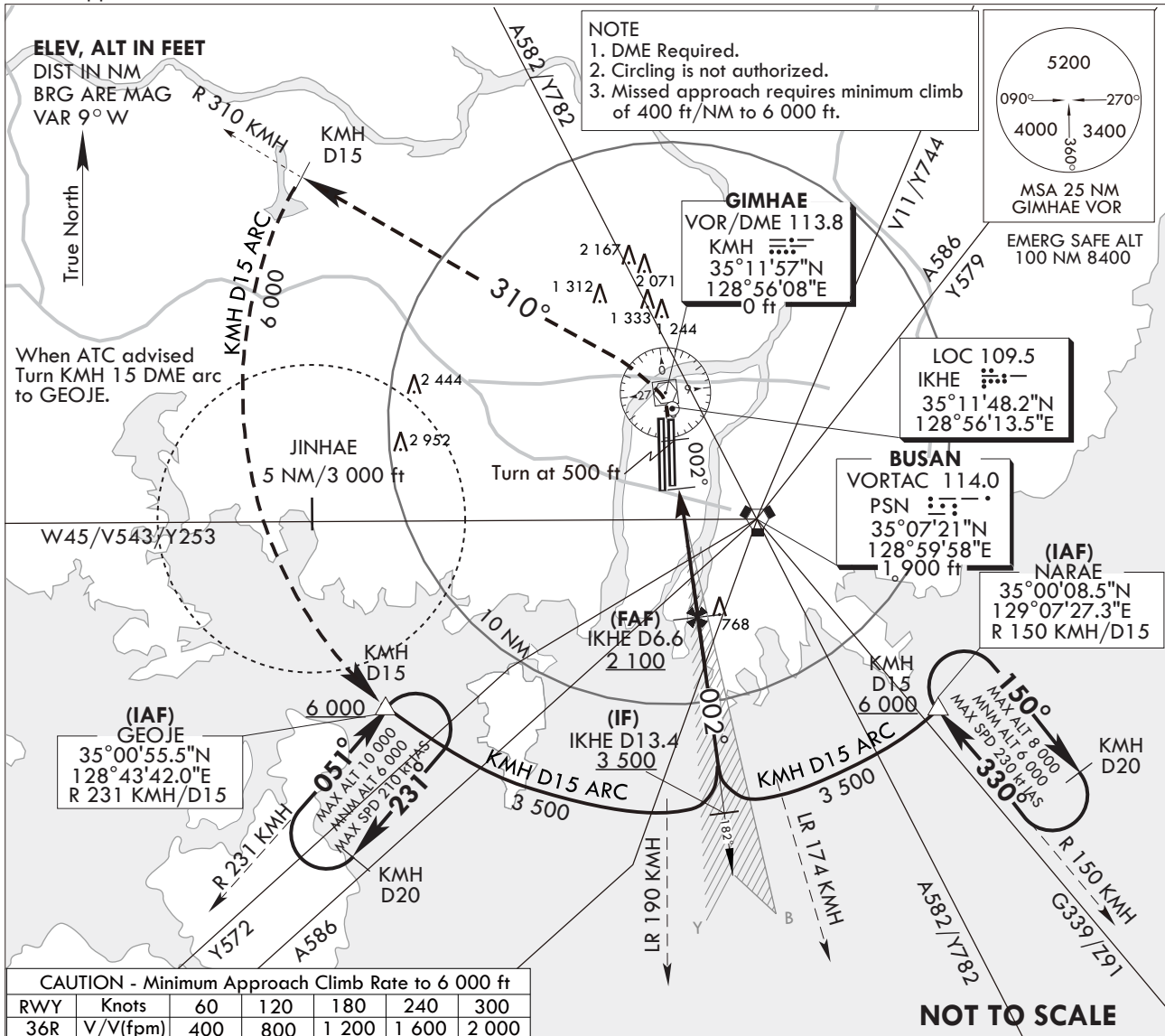
**INSTRUMENT
APPROACH
CHART**

AERODROME ELEV 13 ft
HEIGHTS RELATED TO
RWY 36R ELEV TDZ 8 ft

GIMHAE APP	125.5	364.0
GIMHAE TWR	118.1	118.450
	233.3	236.6

BUSAN/Gimhae Intl(RKPK)
ILS Y RWY 36R

Note : Approach and circle to land under U.S. TERPS.



CATEGORY	A	B	C	D
S-ILS 36R	208/18 200 (200-1/2)		208/24* 200 (200-1/2) *Use civil only RVR 18	
ALS INOP	208/40 200 (200-3/4)			

NOTE
1. Use IKHE DME when on the localizer course.
2. VGSI and ILS glidepath not coincident.
(VGSI Angle 3.00° TCH 75)

Change : Information of glide slope.

INTENTIONALLY

LEFT

BLANK

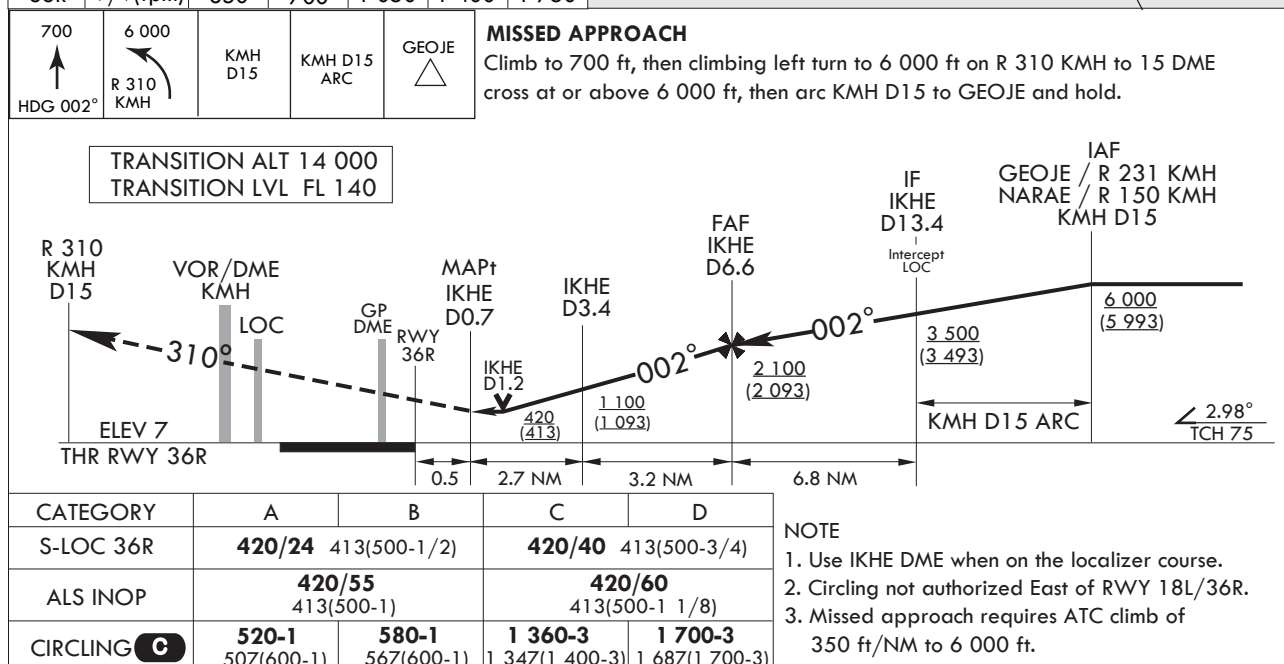
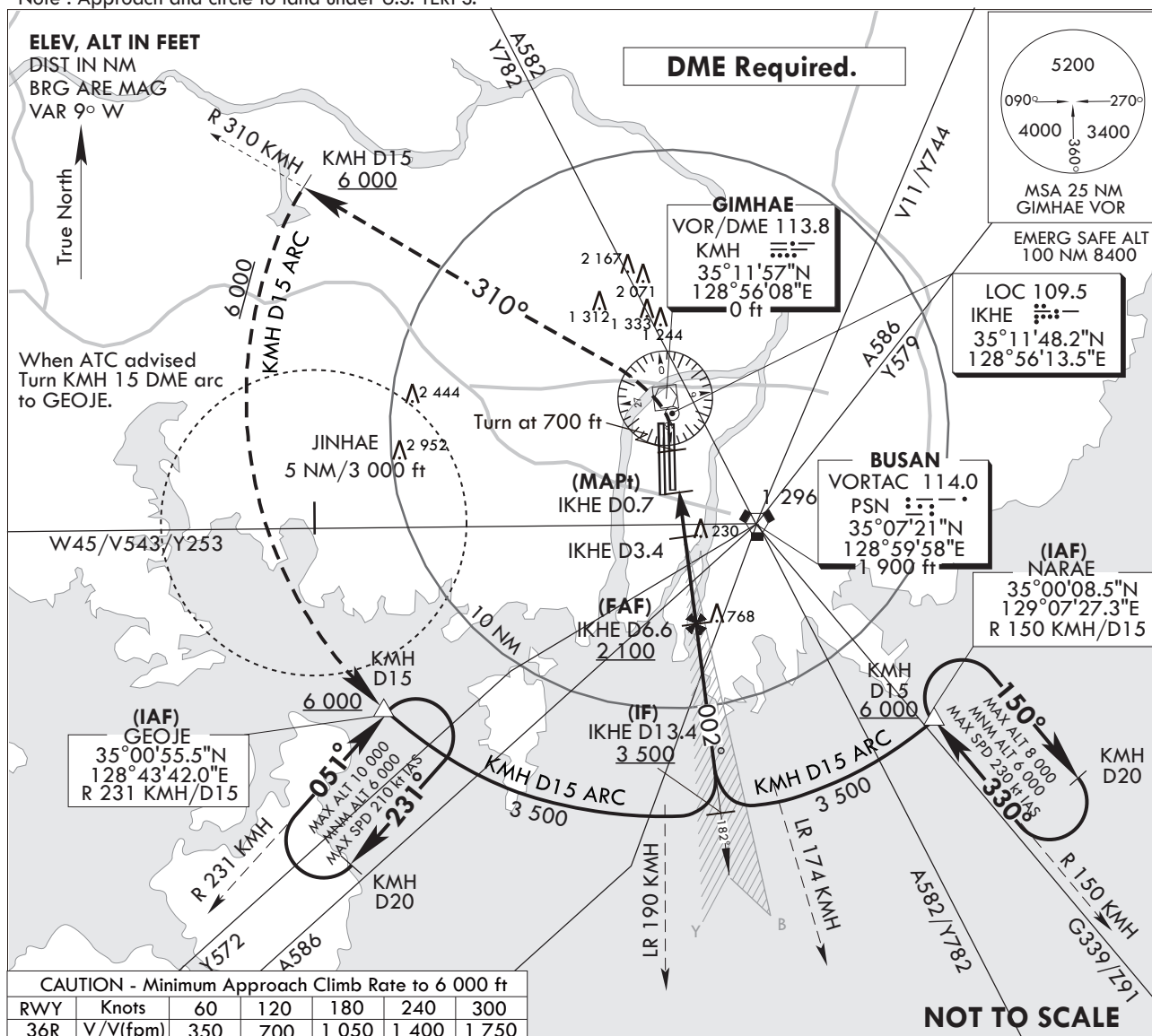
**INSTRUMENT
APPROACH
CHART**

AERODROME ELEV 13 ft
HEIGHTS RELATED TO
THR RWY 36R - ELEV 7 ft

GIMHAE APP	125.5	364.0
GIMHAE TWR	118.1	118.450
	233.3	236.6

BUSAN/Gimhae Intl(RKPK)
LOC Y RWY 36R

Note : Approach and circle to land under U.S. TERPS.



Change : Withdrawal of symbol for glide slope.

INTENTIONALLY

LEFT

BLANK

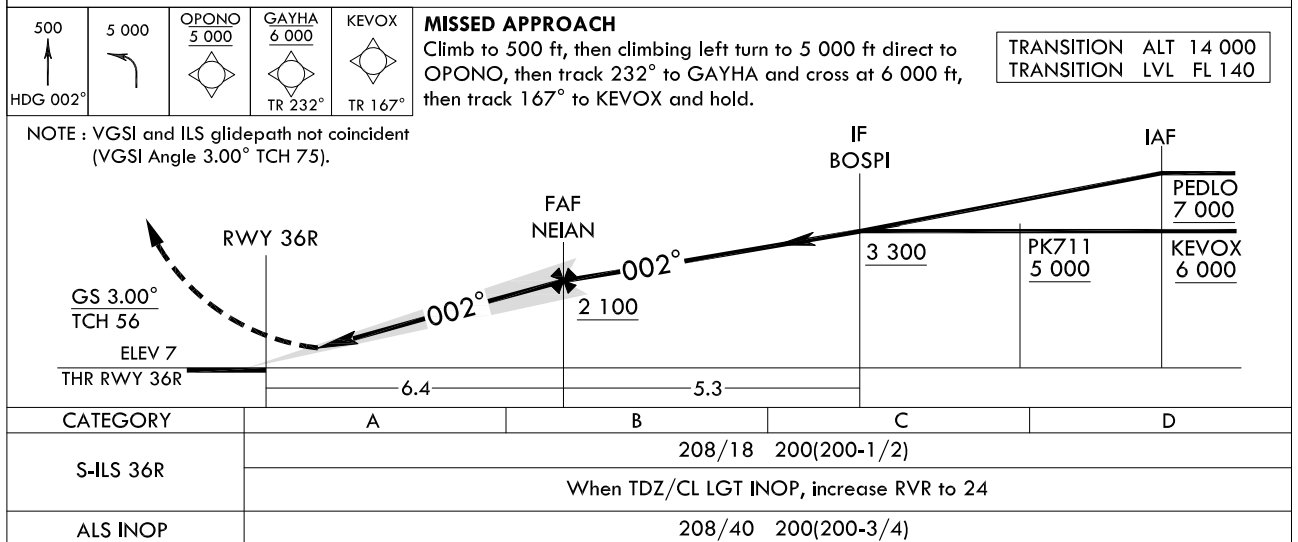
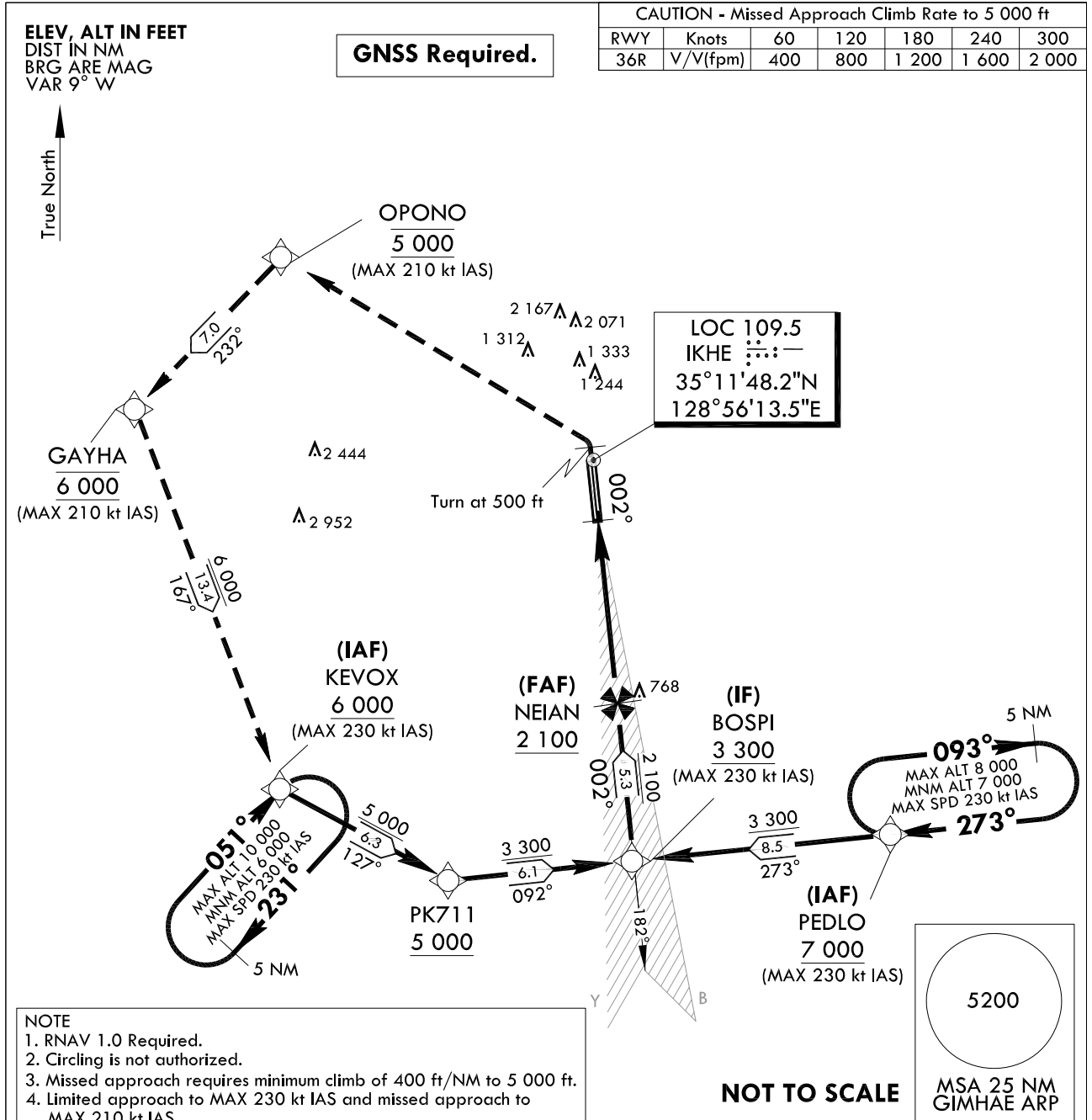
**INSTRUMENT
APPROACH
CHART**

AERODROME ELEV 13 ft
HEIGHTS RELATED TO
RWY 36R ELEV TDZ 8 ft

GIMHAE APP 125.5 364.0
GIMHAE TWR 118.1 118.45
233.3 236.6

BUSAN/Gimhae Intl(RKPK)
ILS Z RWY 36R

Note : Approach and circle to land under U.S. TERPS.



Change : Information of glide slope.

AERONAUTICAL DATA TABULATION

Instrument Approach Procedure Coding Tables

ILS Z RWY 36R - via PEDLO to BOSPI(IF)

Serial Number	Path Descriptor	Waypoint Identifier	Fly-over	Course/Track °M(T)	Distance (NM)	Turn direction	Altitude (ft)	Speed (kt)	Coordinates	VPA/TCH	Navigation specification	Remarks
001	-	PEDLO	-	-	-	-	+7 000	-230	34°59'23.1"N 129°08'15.3"E	-	RNAV 1	IAF
002	TF	BOSPI	-	272.75(264.23)	8.5	-	+3 300	-230	34°58'31.2"N 128°57'56.1"E	-	RNAV 1	IF

ILS Z RWY 36R - via KEVOX to BOSPI(IF)

Serial Number	Path Descriptor	Waypoint Identifier	Fly-over	Course/Track °M(T)	Distance (NM)	Turn direction	Altitude (ft)	Speed (kt)	Coordinates	VPA/TCH	Navigation specification	Remarks
001	-	KEVOX	-	-	-	-	+6 000	-230	35°00'51.7"N 128°43'47.2"E	-	RNAV 1	IAF
002	TF	PK711	-	126.82(118.30)	6.3	-	+5 000	-230	34°57'51.9"N 128°50'32.3"E	-	RNAV 1	SDF
003	TF	BOSPI	-	092.35(083.83)	6.1	-	+3 300	-230	34°58'31.2"N 128°57'56.1"E	-	RNAV 1	IF

ILS Z RWY 36R - via BOSPI(IF) to MAHF

Serial Number	Path Descriptor	Waypoint Identifier	Fly-over	Course/Track °M(T)	Distance (NM)	Turn direction	Altitude (ft)	Speed (kt)	Coordinates	VPA/TCH	Navigation specification	Remarks
001	TF	BOSPI	-	-	-	-	+3 300	-230	34°58'31.2"N 128°57'56.1"E	-	RNAV 1	IF
002	TF	NEIAN	-	002.49(353.97)	5.3	-	+2 100	-	35°03'46.6"N 128°57'15.5"E	-	-	FAF
003	-	DA	-	002.48(353.96)	-	-	+208	-	-	-	LOC	DA
004	-	RWY 36R	-	002.48(353.96)	-	-	-	-	35°10'10.10"N 128°56'26.14"E	3.0/56	LOC	-
005	VA	-	-	002.48(353.96)	-	-	+500	-	-	-	-	CG 400 ft/NM to 5 000 ft
006	DF	OPONO	-	-	-	L	@5 000	-210	35°18'24.2"N 128°43'46.2"E	-	RNAV 1	CG 400 ft/NM to 5 000 ft
007	TF	GAYHA	-	232.27(223.75)	7.0	-	@6 000	-210	35°13'22.4"N 128°37'54.4"E	-	RNAV 1	-
008	TF	KEVOX	-	167.38(158.86)	13.4	-	+6 000	-230	35°00'51.7"N 128°43'47.2"E	-	RNAV 1	-

HOLDING PROCEDURE

Holding Identification	Path Descriptor	Waypoint Identifier	Fly-over	Course/Track °M(T)	Distance (NM)	Turn direction	Altitude (ft)	Speed (kt)	Coordinates	VPA/TCH	Navigation specification	Remarks
ILS Z RWY 36R	HM	PEDLO	-	272.59(264.07)	5.0	R	-8 000 +7 000	-230	34°59'23.1"N 129°08'15.3"E	-	RNAV 1	Hold at PEDLO E Right Turn 273° Inbound 5 NM Leg.
	HM	KEVOX	-	051.05(042.53)	5.0	R	-10 000 +6 000	-230	35°00'51.7"N 128°43'47.2"E	-	RNAV 1	Hold at KEVOX SW Right Turn 051° Inbound 5 NM Leg.

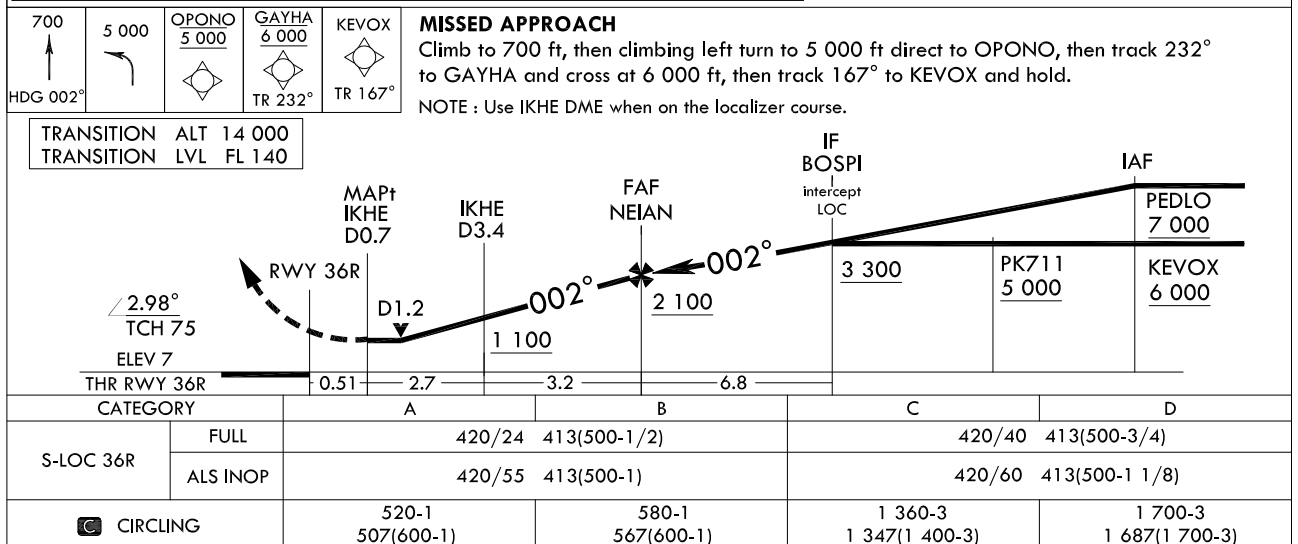
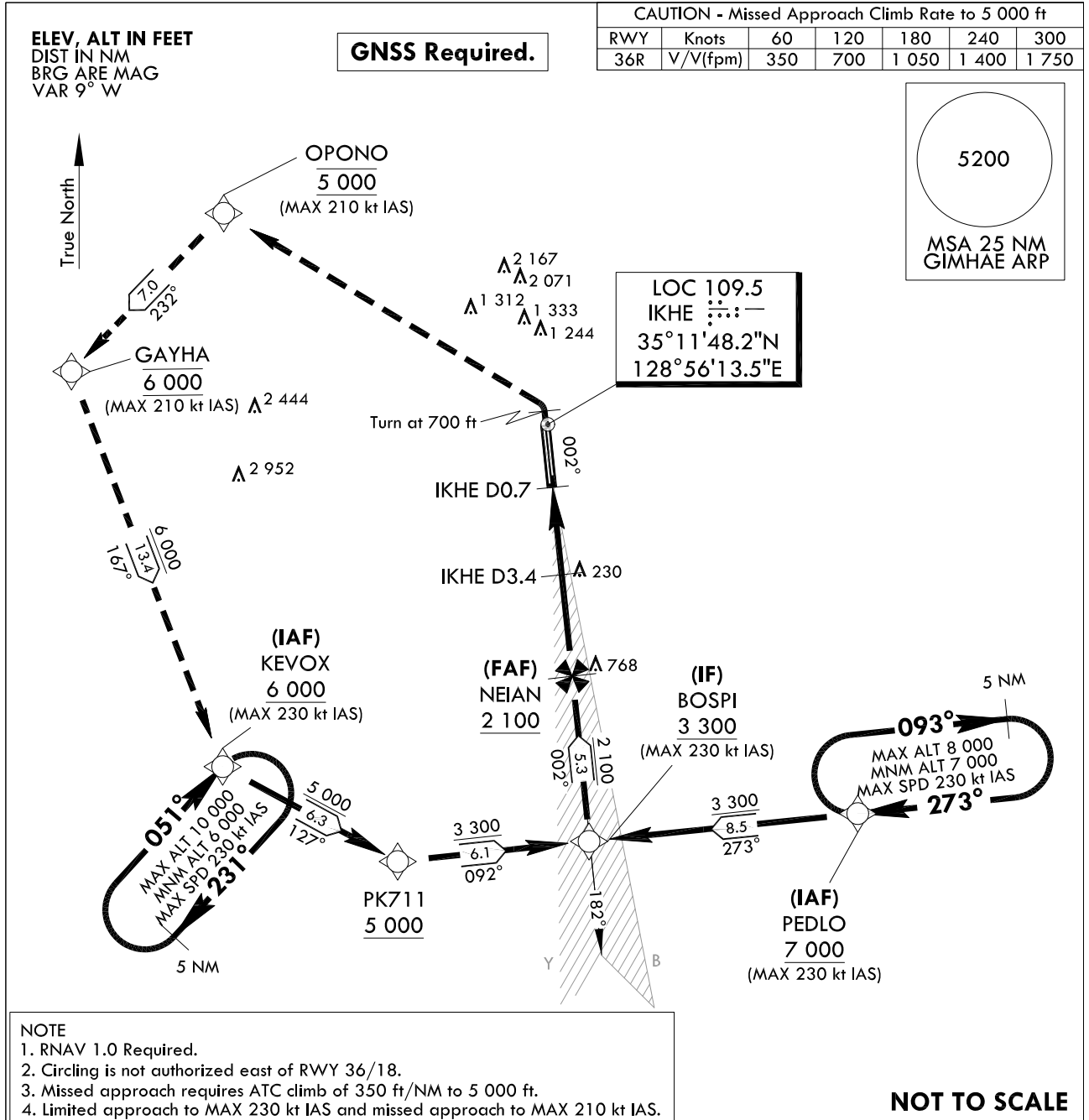
**INSTRUMENT
APPROACH
CHART**

AERODROME ELEV 13 ft
HEIGHTS RELATED TO
THR RWY 36R - ELEV 7 ft

GIMHAE APP 125.5 364.0
GIMHAE TWR 118.1 118.45
233.3 236.6

BUSAN/Gimhae Intl(RKPK)
LOC Z RWY 36R

Note : Approach and circle to land under U.S. TERPS.



Change : Withdrawal of symbol for glide slope.

AERONAUTICAL DATA TABULATION

Instrument Approach Procedure Coding Tables

LOC Z RWY 36R - via PEDLO to BOSPI(IF)

Serial Number	Path Descriptor	Waypoint Identifier	Fly-over	Course/Track °M(°T)	Distance (NM)	Turn direction	Altitude (ft)	Speed (kt)	Coordinates	VPA/TCH	Navigation specification	Remarks
001	-	PEDLO	-	-	-	-	+7 000	-230	34°59'23.1"N 129°08'15.3"E	-	RNAV 1	IAF
002	TF	BOSPI	-	272.75(264.23)	8.5	-	+3 300	-230	34°58'31.2"N 128°57'56.1"E	-	RNAV 1	IF

LOC Z RWY 36R - via KEVOX to BOSPI(IF)

Serial Number	Path Descriptor	Waypoint Identifier	Fly-over	Course/Track °M(°T)	Distance (NM)	Turn direction	Altitude (ft)	Speed (kt)	Coordinates	VPA/TCH	Navigation specification	Remarks
001	-	KEVOX	-	-	-	-	+6 000	-230	35°00'51.7"N 128°43'47.2"E	-	RNAV 1	IAF
002	TF	PK711	-	126.82(118.30)	6.3	-	+5 000	-230	34°57'51.9"N 128°50'32.3"E	-	RNAV 1	SDF
003	TF	BOSPI	-	092.35(083.83)	6.1	-	+3 300	-230	34°58'31.2"N 128°57'56.1"E	-	RNAV 1	IF

LOC Z RWY 36R - via BOSPI(IF) to MAHF

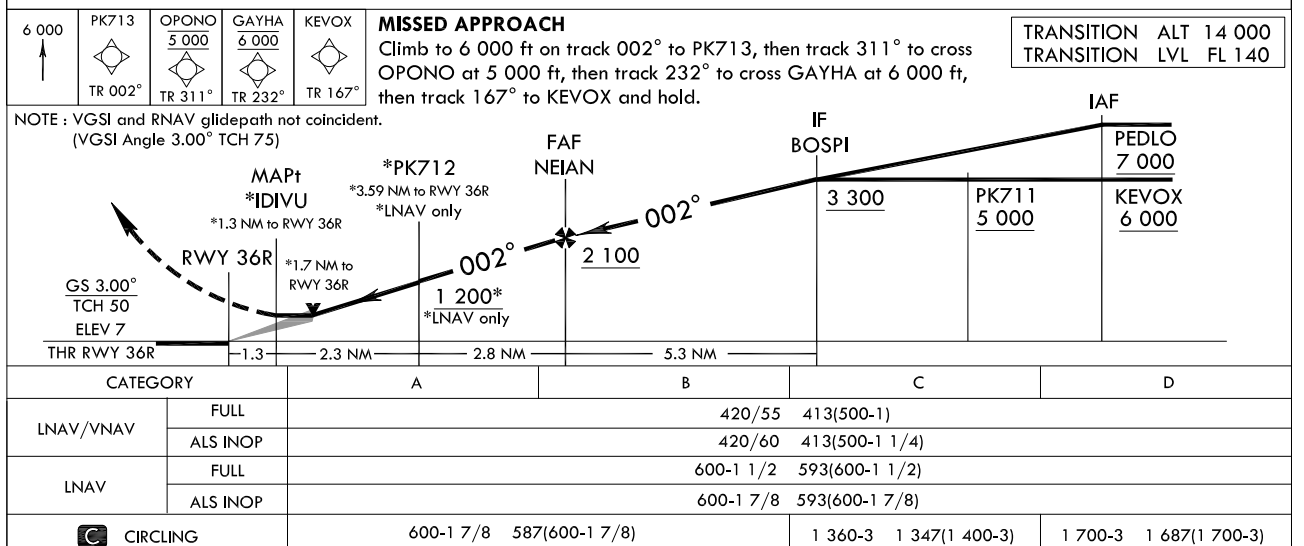
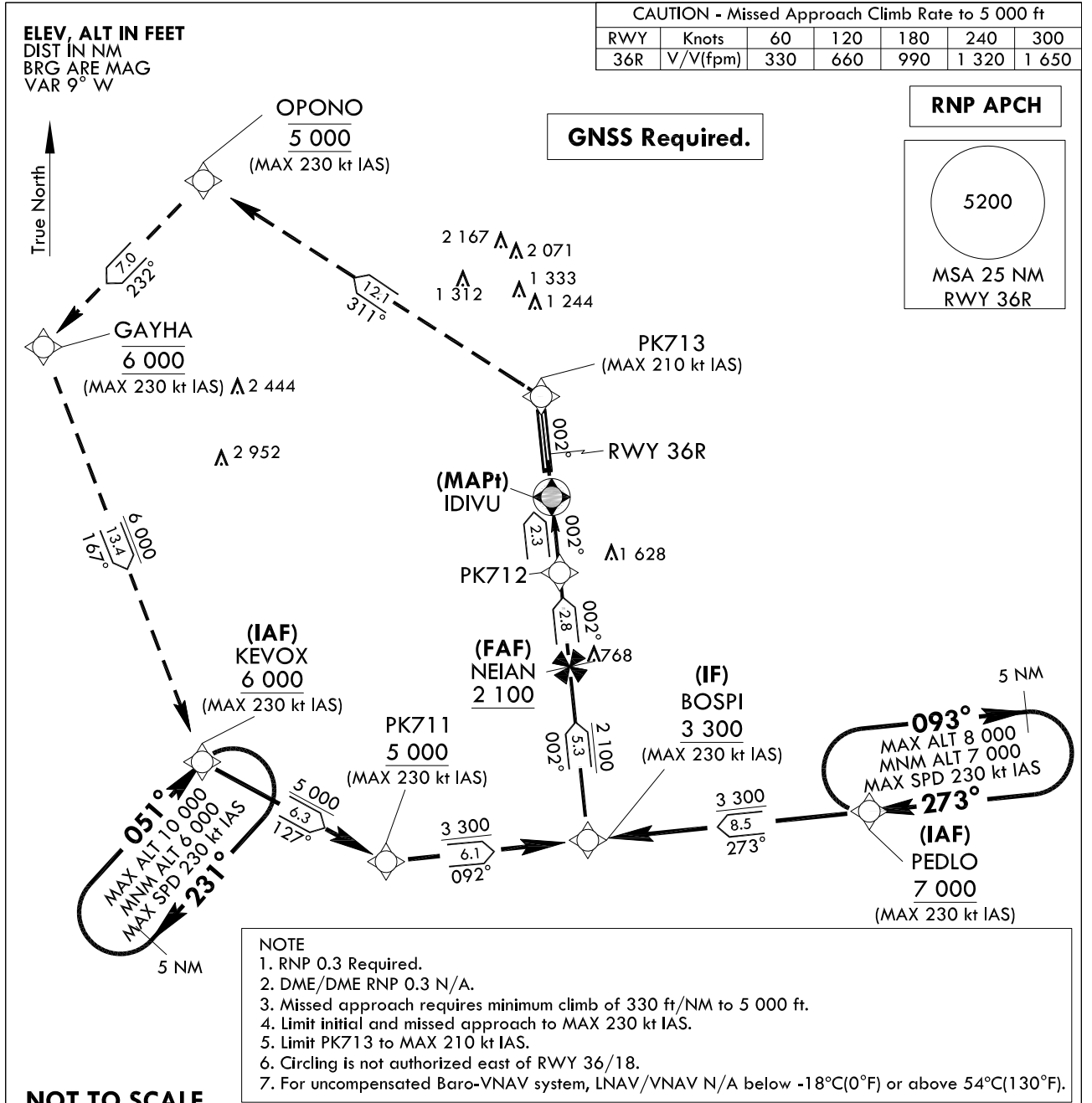
Serial Number	Path Descriptor	Waypoint Identifier	Fly-over	Course/Track °M(°T)	Distance (NM)	Turn direction	Altitude (ft)	Speed (kt)	Coordinates	VPA/TCH	Navigation specification	Remarks
001	TF	BOSPI	-	-	-	-	+3 300	-230	34°58'31.2"N 128°57'56.1"E	-	RNAV 1	IF
002	TF	NEIAN	-	002.49(353.97)	5.3	-	+2 100	-	35°03'46.6"N 128°57'15.5"E	-	LOC	FAF
003	-	IKHE D3.4	-	002.48(353.96)	3.2	-	+1 100	-	35°06'57.8"N 128°56'50.9"E	-	LOC	SDF
004	-	IKHE D0.7	-	002.48(353.96)	2.7	-	+420	-	35°09'39.4"N 128°56'30.1"E	-	LOC	MAPt
005	-	RWY 36R	-	002.48(353.96)	0.51	-	-	-	35°10'10.10"N 128°56'26.14"E	2.98/75	LOC	-
006	VA	-	-	002.48(353.96)	-	-	+700	-	-	-	-	CG 350 ft/NM to 5 000 ft
007	DF	OPONO	-	-	-	L	@5 000	-210	35°18'24.2"N 128°43'46.2"E	-	RNAV 1	CG 350 ft/NM to 5 000 ft
008	TF	GAYHA	-	232.27(223.75)	7.0	-	@6 000	-210	35°13'22.4"N 128°37'54.4"E	-	RNAV 1	-
009	TF	KEVOX	-	167.38(158.86)	13.4	-	+6 000	-230	35°00'51.7"N 128°43'47.2"E	-	RNAV 1	-

HOLDING PROCEDURE

Holding Identification	Path Descriptor	Waypoint Identifier	Fly-over	Course/Track °M(°T)	Distance (NM)	Turn direction	Altitude (ft)	Speed (kt)	Coordinates	VPA/TCH	Navigation specification	Remarks
LOC Z RWY 36R	HM	PEDLO	-	272.59(264.07)	5.0	R	-8 000 +7 000	-230	34°59'23.1"N 129°08'15.3"E	-	RNAV 1	Hold at PEDLO E Right Turn 273° Inbound 5 NM Leg.
	HM	KEVOX	-	051.05(042.53)	5.0	R	-10 000 +6 000	-230	35°00'51.7"N 128°43'47.2"E	-	RNAV 1	Hold at KEVOX SW Right Turn 051° Inbound 5 NM Leg.

INSTRUMENT
APPROACH
CHARTAERODROME ELEV 13 ft
HEIGHTS RELATED TO
THR RWY 36R - ELEV 7 ftGIMHAE APP 125.5 364.0
GIMHAE TWR 118.1 118.45
233.3 236.6BUSAN/Gimhae Intl(RKPK)
RNP RWY 36R

Note : Approach and circle to land under U.S. TERPS.



Change : Information of MAG VAR(7° W → 9° W) and instrument approach procedure for RWY 36R.

BUSAN/Gimhae Intl(RKPK)
RNP RWY 36R

AERONAUTICAL DATA TABULATION

Instrument Approach Procedure Coding Tables

RNP RWY 36R - via PEDLO to BOSPI(IF)									
Serial Number	Path Descriptor	Waypoint Identifier	Fly-over	Course/Track °M(T)	Distance (NM)	Turn direction	Altitude (ft)	Speed (kt)	Coordinates
001	-	PEDLO	-	-	-	-	+7 000	-230	34°59'23.1"N 129°08'15.3"E
002	TF	BOSPI	-	272.75(264.23)	8.5	-	+3 300	-230	34°58'31.2"N 128°57'56.1"E

RNP RWY 36R - via KEVOX to BOSPI(IF)									
Serial Number	Path Descriptor	Waypoint Identifier	Fly-over	Course/Track °M(T)	Distance (NM)	Turn direction	Altitude (ft)	Speed (kt)	Coordinates
001	-	KEVOX	-	-	-	-	+6 000	-230	35°00'51.7"N 128°43'47.2"E
002	TF	PK711	-	126.82(118.30)	6.3	-	+5 000	-230	34°57'51.9"N 128°50'32.3"E
003	TF	BOSPI	-	092.35(083.83)	6.1	-	+3 300	-230	34°58'31.2"N 128°57'56.1"E

RNP RWY 36R - via BOSPI(IF) to MAHF									
Serial Number	Path Descriptor	Waypoint Identifier	Fly-over	Course/Track °M(T)	Distance (NM)	Turn direction	Altitude (ft)	Speed (kt)	Coordinates
001	TF	BOSPI	-	-	-	-	+3 300	-230	34°58'31.2"N 128°57'56.1"E
002	TF	NEIAN	-	002.49(353.97)	5.3	-	+2 100	-	35°03'46.6"N 128°57'15.5"E
003	TF	PK712	-	002.48(353.96)	2.8	-	+1 200	-	35°06'35.6"N 128°56'53.8"E
004	TF	IDIVU	Y	002.48(353.96)	2.3	-	+600	-	35°08'52.4"N 128°56'36.2"E
005	TF	PK713	-	002.51(353.99)	3.1	-	-	-210	35°11'54.5"N 128°56'12.8"E
006	TF	OPONO	-	311.05(302.53)	12.1	-	@5 000	-230	35°18'24.2"N 128°43'46.2"E
007	TF	GAYHA	-	232.27(223.75)	7.0	-	@6 000	-230	35°13'22.4"N 128°37'54.4"E
008	TF	KEVOX	-	167.38(158.86)	13.4	-	+6 000	-230	35°00'51.7"N 128°43'47.2"E

HOLDING PROCEDURE

Holding Identification	Path Descriptor	Waypoint Identifier	Fly-over	Course/Track °M(T)	Distance (NM)	Turn direction	Altitude (ft)	Speed (kt)	Coordinates	VPA/TCH	Navigation specification	Remarks
RNP RWY 36R	HM	PEDLO	-	272.59(264.07)	5.0	R	-8 000 +7 000	-230	34°59'23.1"N 129°08'15.3"E	-	RNAV 1	Hold at PEDLO E Right Turn 273° Inbound 5 NM Leg.
	HM	KEVOX	-	051.05(042.53)	5.0	R	-10 000 +6 000	-230	35°00'51.7"N 128°43'47.2"E	-	RNAV 1	Hold at KEVOX SW Right Turn 051° Inbound 5 NM Leg.

Change : Information of instrument approach procedure for RWY 36R.

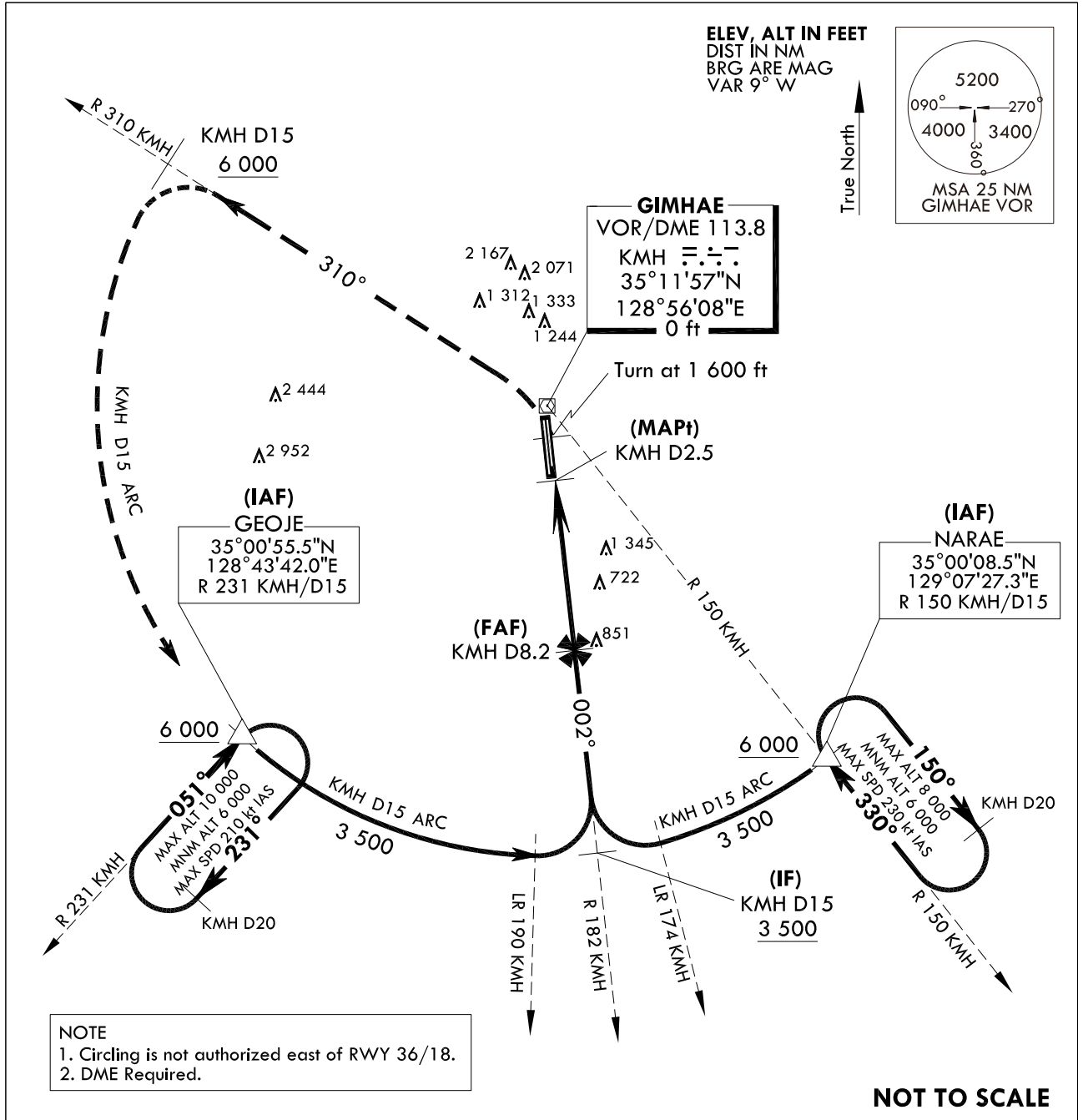
**INSTRUMENT
APPROACH
CHART**

AERODROME ELEV 13 ft
HEIGHTS RELATED TO
THR RWY 36R - ELEV 7 ft

GIMHAE APP 125.5 364.0
GIMHAE TWR 118.1 118.45
233.3 236.6

BUSAN/Gimhae Intl(RKPK)
VOR
RWY 36R

Note : Approach and circle to land under U.S. TERPS.



<div>1 600 ↑ HDG 002°</div>		<div>6 000 R 310 KM</div>	<div>KMH D15</div>	<div>KMH D15 ARC</div>	<div>GEOJE △</div>	<div>MISSED APPROACH Climb to 1 600 ft then left turn climbing 6 000 ft on R 310 KM to 15 DME, then arc KM D15 to GEOJE and hold.</div>	
<div>TRANSITION ALT 14 000 TRANSITION LVL FL 140</div>		<div><div><div><div><div>VOR</div><div>MAPt KM D2.5</div><div>FAF KM D8.2</div><div>IF R 182 KM D15</div><div>IAF GEOJE / R 231 KM NARAE / R 150 KM KM D15</div></div><div><div>6 000</div><div>3 500</div><div>2 100</div></div><div><div>002°</div><div>KM D15 ARC</div></div></div><div><div><div>2.97° TCH 75</div><div>ELEV 7</div></div><div><div>RWY 36R</div><div>THR RWY 36R</div></div><div><div>0.71</div><div>5.7</div><div>6.8</div></div></div></div></div>					
CATEGORY		A		B		C	D
S-VOR 36R	FULL	1 460/40 1 453(1 500 - 3/4) 1 460/60		1 460/55 1 453(1 500 - 1) 1 460 - 1 1/2		1 460 - 3 1 453(1 500 - 3)	
	ALS INOP	1 453(1 500 - 1 1/4) 1 447(1 500 - 1 1/4)		1 453(1 500 - 1 1/2) 1 447(1 500 - 1 1/2)		1 460 - 3 1 700 - 3 1 447(1 500 - 3) 1 687(1 700 - 3)	
CIRCLING		1 460 - 1 1/4		1 460 - 1 1/2		1 460 - 3	

INTENTIONALLY

LEFT

BLANK

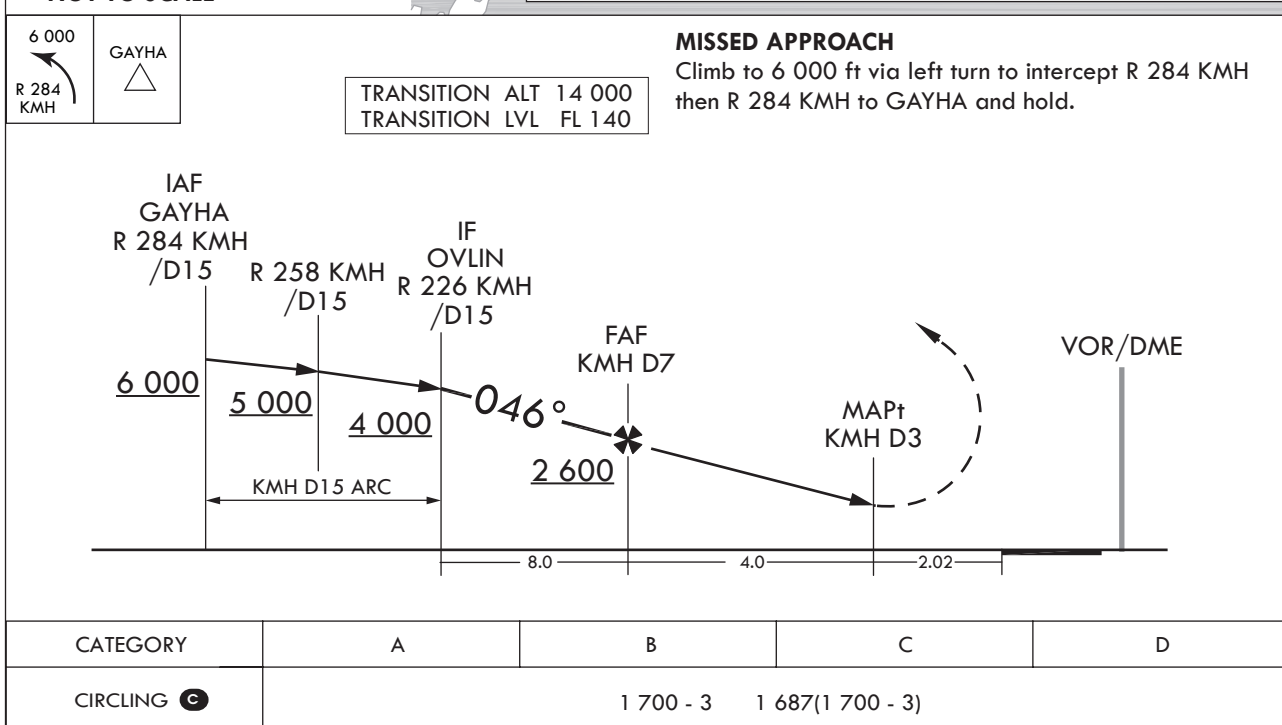
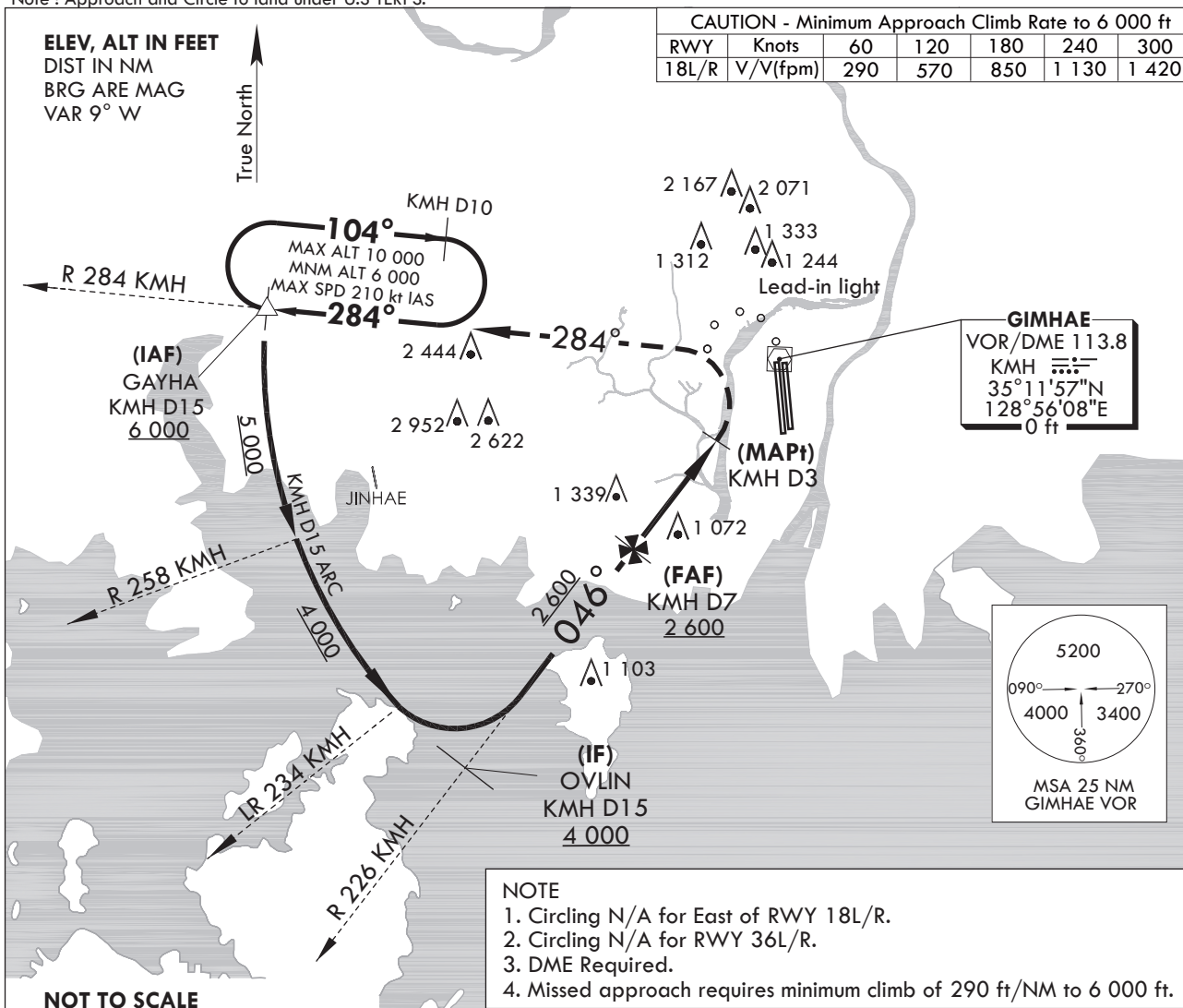
**INSTRUMENT
APPROACH
CHART**

AERODROME ELEV 13 ft
HEIGHTS RELATED TO
THR RWY 18L - ELEV 8 ft
THR RWY 18R - ELEV 13 ft

GIMHAE APP 125.5 364.0
GIMHAE TWR 118.1 233.3
118.450 236.6

BUSAN/Gimhae Intl(RKPK)
VOR - A
RWY 18L/R

Note : Approach and Circle to land under U.S TERPS.



Change : Information of procedure name(VOR/DME - A → VOR - A).

INTENTIONALLY

LEFT

BLANK

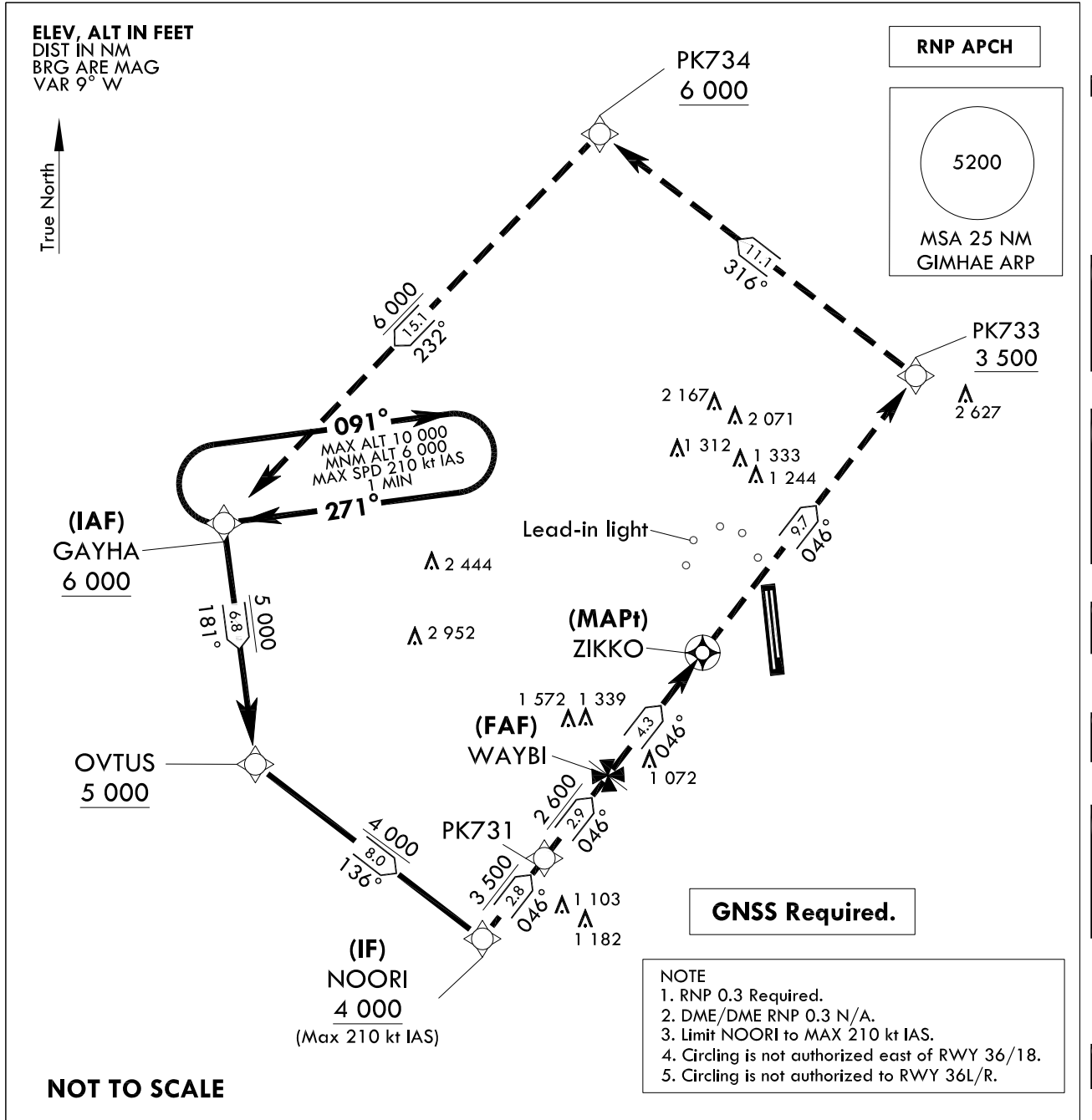
**INSTRUMENT
APPROACH
CHART**

AERODROME ELEV 13 ft

GIMHAE APP 125.5 364.0
GIMHAE TWR 118.1 118.45
233.3 236.6

**BUSAN/Gimhae Intl(RKPK)
RNP B RWY 18L/R**

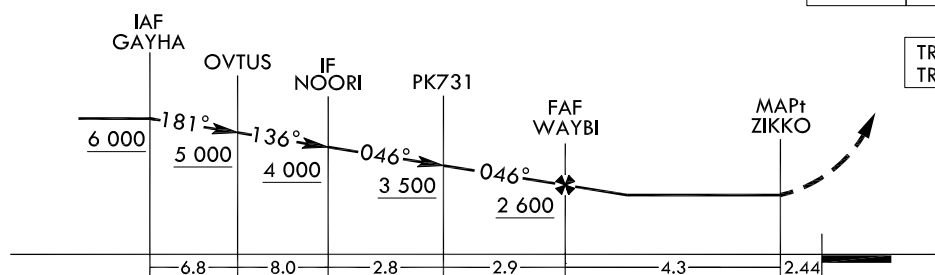
Note : Approach and circle to land under U.S. TERPS.



MISSED APPROACH

Climb to 6 000 ft via track 046° to cross PK733 at or above 3 500 ft, then track 316° to cross PK734 at or above 6 000 ft, then track 232° to cross GAYHA at or above 6 000 ft and hold.

6 000	PK733	PK734 6 000	GAYHA 6 000
↑	✧	✧	✧
	TR 046°	TR 316°	TR 232°



TRANSITION ALT 14 000
TRANSITION LVL FL 140

CATEGORY	A	B	C	D
LNAV/VNAV			N/A	
LNAV			N/A	
CIRCLING		1 700-3	1 687(1 700-3)	

Change : Information of MAG VAR(7° W → 9° W) and instrument approach procedure for RWY 18L/R.

BUSAN/Gimhae Int'l(RKPK)
RNP B RWY 18L/R

AERONAUTICAL DATA TABULATION

Instrument Approach Procedure Coding Tables

RNP B RWY 18L/R

Serial Number	Path Descriptor	Waypoint Identifier	Fly-over	Course/Track °M(°T)	Distance (NM)	Turn direction	Altitude (ft)	Speed (kt)	Coordinates	VPA/ TCH	Navigation specification	Remarks
001	TF	GAYHA	-	-	-	-	+6 000	-	35°13'22.4"N 128°37'54.4"E	-	RNP APCH	IAF
002	TF	OVTUS	-	180.88(172.36)	6.75	-	+5 000	-	35°06'40.3"N 128°39'00.0"E	-	RNP APCH	-
003	TF	NOORI	-	135.89(127.37)	7.95	-	+4 000	-210	35°01'50.0"N 128°46'41.8"E	-	RNP APCH	IF
004	TF	PK731	-	045.96(037.44)	2.82	-	+3 500	-	35°04'04.7"N 128°48'47.2"E	-	RNP APCH	-
005	TF	WAYBI	-	045.98(037.46)	2.9	-	+2 600	-	35°06'23.0"N 128°50'56.2"E	-	RNP APCH	FAF
006	TF	ZIKKO	Y	046.00(037.48)	4.3	-	+1 700	-	35°09'48.1"N 128°54'07.8"E	-	RNP APCH	MAPt
007	TF	PK733	-	046.03(037.51)	9.7	-	+3 500	-	35°17'30.5"N 129°01'20.9"E	-	RNP APCH	-
008	TF	PK734	-	316.10(307.58)	11.07	-	+6 000	-	35°24'15.6"N 128°50'37.2"E	-	RNP APCH	-
009	TF	GAYHA	-	232.33(223.81)	15.05	-	+6 000	-	35°13'22.4"N 128°37'54.4"E	-	RNP APCH	-
010	HM	GAYHA	-	271.05(262.53)	-	R	-10 000 +6 000	-210	35°13'22.4"N 128°37'54.4"E	-	-	1 min (Inbound timing)

Change : Information of instrument approach procedure for RWY 18L/R.